

T A N C O   A U T O W R A P   S Y S T E M S

400S8 & 500S8 Model (1993)

OPERATORS HANDBOOK

AND

PARTS LIST

WD658-M01193

<u>INDEX</u>	<u>PAGE</u>
Safety instructions	1
Technical specifications	2
Pre delivery instructions	3
Transport instructions	3
Machine identification	3
Preparation of a new machine	4
Tractor towing hitch	4
Hydraulic connections	4
Bale Wrap Controller	5
Bale Wrap Controller	6
Operating instructions	7
Film overlap system	8
Service and Maintenance	9
Film Threading diagram	9
Drive belt tensioning system	10
Quadrant Assembly Instructions	11
Index Shaft sprocket clearance adjustment	12
Index Shaft disc brake adjustment	13
Film adaptor operating instruction	14
Hydraulic Circuit chart 400 Model (Trailed)	15
Hydraulic Circuit Chart 500/1050 Model (Trailed)	15:1
Hydraulic Components illustrated (400 Model)	16:
Parts list for above	16:1
Hydraulic Components illustrated (500/1050 Model)	17
Parts list for above	17:1
50% Overlap System illustrated (750mm wide film)	18
Parts list for above	18:1
50% Overlap system illustrated (500mm wide film)	19
Parts list for above	19:1
Indexing Drive Assembly illustrated	20:
Parts list for above	20:1
Brake Arrangement for Indexing Shaft illustrated	21:
Parts list for above	21:1
Autowrap illustrated (400 & 500 Model)	22:
Parts list for above	22:1/2/3
Lift Arm Assembly illustrated (400 & 500 Model)	23
Parts list for above	23:1
Film Dispensing System illustrated (400 Model)	24
Parts list for above	24:1



## TANCO AUTOWRAP

### GENERAL SAFETY INSTRUCTIONS

Before operating, adjusting or servicing the machine it is important that these instructions are carefully read by those directly concerned.

Whilst every care has been taken in the design of this machine there remains a certain amount of risk to Personell whilst the machine is in use. It is strongly recommended that the user/operator takes all possible precautions to ensure both his own safety and that of others while the Autowrap is operating. The area around the machine should be kept clear at all times and only the operator should be allowed near the machine when working.

The Autowrap is designed and sold for agricultural purposes and as such complies with the definition as laid down for an Agricultural Trailed Appliance. Under this definition the machine is not fitted with brakes or lights. IT SHOULD NOT UNDER ANY CIRCUMSTANCES BE TOWED ON THE HIGHWAY AT SPEEDS IN EXCESS OF 20 m.p.h. (30 km/h).

If the machine is to be towed on the highway out of daylight hours then a suitable lighting board with indicators, stop lights and rear lights should be fixed to the rear of the machine before proceeding.

Bales should be loaded carefully on to the turntable and not dropped from a height.

Owners and operators are advised to contact their dealer regarding any field or service problems.

### SPECIAL SAFETY INSTRUCTIONS

1. Stop engine of tractor before working on machine.
2. Put a suitable prop under raised platform before working in this area.
3. Always raise Lift Arm and fit safety prop before transporting machine on public roads.
4. Lift Arm should always be lowered before operating turntable.
5. Ensure platform rollers are parallel to Lift Arm before arm is raised.

### OPERATING SAFETY INSTRUCTIONS

1. Keep onlookers clear of machine at all times, especially when loading and offloading bales.
2. Beware of rotating Turntable.
3. Do not exceed maximum 25 r.p.m. of turntable.

THINK OF YOUR PERSONAL SAFETY AND THAT OF OTHERS AT ALL TIMES

## TECHNICAL SPECIFICATIONS

					400 & 500 Model (Trailed)
<b>Dimensions</b>					
Total length - Excluding Bale Ramp	...	...	...	...	350 cm
Width - excluding lift arm	...	...	...	...	221 cm
" - lift arm fully raised	...	...	...	...	243 cm
" - lift arm lowered	...	...	...	...	380 cm
Height to top of side (bale guide) rollers	...	...	...	...	110 cm
" to top of lift arm	...	...	...	...	242 cm
<b>Weight</b>					
With lift arm	...	...	...	...	1080 Kgs
Without lift arm	...	...	...	...	960 Kgs
<b>Wheels</b>					
Size	...	...	...	...	10-80. 12
Pressure	...	...	...	...	42 p.si
<b>Lift arm capacity - Axle extended normally</b>					
" " " - Axle extended fully	...	...	...	...	750 Kgs
" " " - Axle extended fully	...	...	...	...	900 Kgs
Speed of turntable	...	...	...	...	25 rev/min*
Oil requirement	...	...	...	...	23 litres/min (165 kp cm <sup>2</sup> )
Attachment to tractor	...	...	...	...	Tractor Hitch
Bale sizes	...	...	...	...	120 x 120 cm up to 120 x 153 cm max 1000 Kgs
Film (Width of Roll)	...	...	...	...	500mm on 400 Model & 750mm on 500 Model

\* The speed of rotation can be varied to suit various conditions but on no account should it exceed 25 r.p.m. (Speeds in excess of 25 r.p.m. will void warranty).

### PRE-DELIVERY INSTRUCTIONS

1. Check that machine complies with customers requirements.
2. Check tightness of all nuts and bolts.
3. Grease all lubrication points making sure index rollers and sprockets are greased.
4. If for operation with a John Deere tractor, ensure valve is converted to closed centre.
5. If Lift Arm fitted, ensure that the operating cable for the Lift Arm is fitted to the spool valve.
6. Check tyre pressures.
7. If for operation by Power Pack ensure stabiliser legs are fitted in the two sockets on each side of the main frame at rear of machine.
8. Check that non-return valve is fitted in return line.
9. Check that film dispenser is correctly fitted with marked gear box at top, and that slave roller is adjusted to avoid contact with the gear box covers.
10. Check that all guards are in place.
11. Check that all operation and safety stickers are intact.
12. Check Serial No. plate and note Serial No. of machine for record purposes.
13. Check that bale off loading ramp/mat is fitted.
14. Connect to hydraulic power source and check that everything functions properly and in accordance with instruction stickers.
15. Inform operator of Max speed 25 RPM

### TRANSPORT INSTRUCTIONS

1. Never use straps around the machine when lifting. Use only the following lifting points:- Tow hitch and two sockets on each side of main frame at rear for trailed models. 3 Pt. Linkage frame and two sockets on each side of main frame at rear for 3 Pt.Linkage Model.
2. When the machine is towed on the road the Lifting Arm (if fitted) must be in the fully raised position, the safety prop fitted and the axle returned to narrowest position.
3. Raise the Parking Jack on trailed models before moving machine.

### MACHINE IDENTIFICATION

The Serial Number plate is located on main frame forward of offside wheel on trailed models and on 3 Pt. Linkage frame for 3 Pt. Linkage model.

Always refer to this number when ordering parts.

### PREPARATION OF A NEW MACHINE

1. Check tyre pressures.
2. Check height of film mast to ensure that centre line of film spool is level with the centre line of the bale on the turntable. This will alter with different bale diameters. If this alignment is not correct more film than necessary will be used. See Fig.8 Page 7.
3. When connected to a John Deere\* tractor the Inlet Plate must be converted to closed centre. See Page 13
4. On Trailed Model. Adjust width of Lift Arm to suit size of bale to be wrapped and set bale stop so bale loads centrally onto turntable.
5. On Trailed Model. Extend axle on same side as Lift Arm by powering down Lift Arm sufficiently to raise wheel clear of ground. Remove pin, pull out wheel to first position for 750 Kg. bales or to second position for 900 Kg. bales. Replace pin and locking clip, raise Lift Arm. For extra stability on hilly ground it is recommended that the wheel opposite to the lift arm be ballasted.

### TRACTOR TOWING HITCH

IMPORTANT. It is essential that the table of the machine should be kept level at all times when in use. To achieve this an adjustable hitch is fitted to all trailed models. The trailed machine should be fitted to the tractor hitch, and the linkage machine to the tractors rear linkage.

### HYDRAULIC CONNECTIONS

Connect the feed and return hoses from the Autowrap valve to the tractor's double-acting facility.

NOTE: The return hose is fitted with a non-return valve to protect the Autowrap from damage in the event of incorrect connection to tractor hydraulics.

\*N.B. For John Deere the hydraulic circuit must be adapted as in 3 above\*.

NOTE:\* To ensure maximum efficiency and length of life of hydraulic components this machine requires a clean supply of hydraulic oil. IT IS RECOMMENDED THAT THE TRACTOR HYDRAULIC FILTER ELEMENT BE REPLACED AND THEREAFTER MAINTAINED IN ACCORDANCE WITH THE MANUFACTURERS RECOMMENDATIONS.

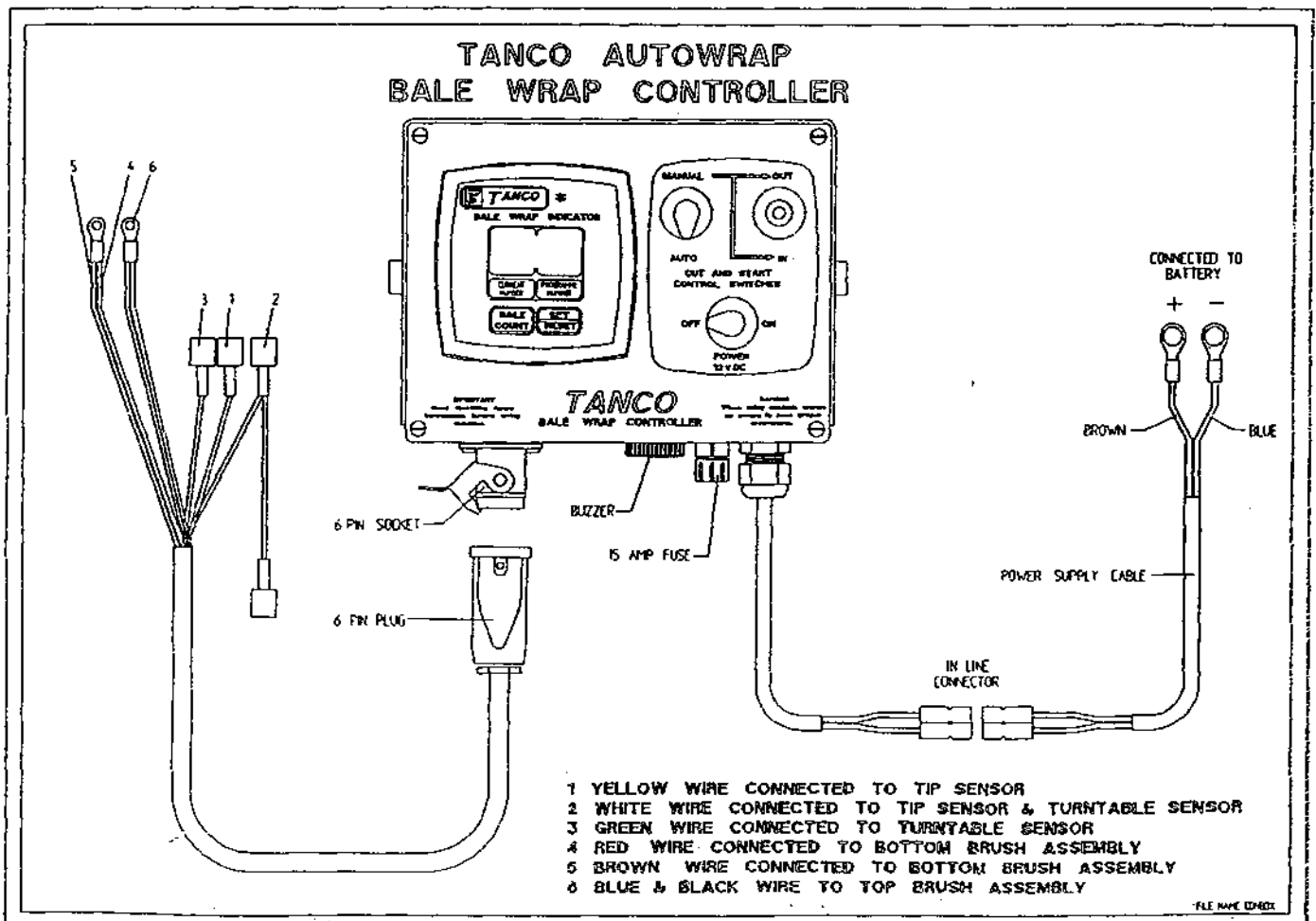
### Bale Wrap Controller:

Connect direct to battery - as per operating instructions and switch on.

Note that it is preset to 16 which is the number of turntable revolutions required to fully wrap a square or round bale using 750 film with 4 layers. This number can be adjusted up or down by pressing the star sign, holding it down, and pressing the set/reset button. See attached film application chart

To enable you to understand how the controller works, here is a brief resume of its functions:

- (1) After two revolutions of the turntable the actuator pushes open the Cut and Start, this action takes 8.5 seconds until the latch engages, then after 6 revolutions of the turntable, the actuator closes for a period of 5.5 seconds and stops in the rest position. When the turntable is tipped, the magnet operates the sensor which activates the linear actuator which closes fully, and in doing so, trips the latch releasing the gripper arm which slams closed under the spring pressure, cutting the film and, at the same time gripping the film for the next bale.





The Bale Wrap Controller has a total of seven functions to control.

To access these functions press/hold \* button and switch on, then release \* button.

A chevron  $\nabla$  appears at the left hand side of the display windows; - this may be moved across the display from left to right by repeatedly pressing \* button.

The seven chevron positions have specific functions and the time for each function may be set by the two buttons at the bottom of the display screen.



Reading from left to right the chevron positions are as follows:

- ✓ (1) Indicates number of turns to activate motor = 2
- ✓ (2) Indicates the number of seconds it powers out until the latch engages = 8.5
- ✓ (3) Indicates the number of revolutions of the turntable before the motor reverses = 6
- ✓ (4) Indicates the number of seconds required to reverse to the park position = 5.5
- ✓ (5) Indicates the number of seconds from the tipping signal until the motor is fully closed = 2.5
- ✓ (6) Indicates the number of revolutions before the set figure at which the buzzer sounds = 0
- (7) No chevron appears but letter N appears. This indicates "Non-Auto Reset" and does not need to be changed; it means that you can go past the preset number of revolutions eg. if set for 22 and you decide to do a few more turns to ensure bale is fully wrapped, you can do so without upsetting the programme.

Note: The act of tipping off the bale completes the programme of functions so if you are demonstrating how the unit works, always finish up by passing a magnet over the trip sensor when you will notice the display return to the preset figure in the right display and to 0 in the left one.

Finally, to lock all functions into the controllers memory, switch power off and back on again.

### OPERATING INSTRUCTIONS

1. Fit roll of film and thread through the Dispenser roller assembly by following the instruction label on the film mast.
2. Set the bale wrap indicator to the correct setting for the size of bale being wrapped and the width of film being used. See Page 6 for list of some recommended settings.
3. Power down Lift Arm until wheel is clear of ground and adjust wheel outward to appropriate setting for bale weight. See para 5, page 4.
4. Adjust tractor engine speed to give turntable speed of 16 - 25 r.p.m.  
NOTE: Speeds in excess of 25 r.p.m. will void Warranty.
5. Position turntable with cut and start unit facing front of machine.
6. Attach film tag end to gripper section of cut and start unit.
7. Rotate turntable anticlockwise through 90 degrees and stop turntable with cut and start unit opposite to lift arm.
8. Locate bale on lift arm, then raise lift arm and gently roll bale onto turntable. Lower arm.
9. Start wrapping, turntable rotating clockwise. Film tension is automatically set so that width of film applied to the bale stays at a constant width of 405 - 410mm for 500mm wide film roll and 615 - 620mm for 750mm wide film roll.
10. Continue wrapping until signal from bale wrap indicator sounds (required number of revolutions has been reached). Then stop with cut and start unit facing towards front of machine and film aligned with gripper section of cut and start unit.
11. Tip bale from machine. When the machine is almost fully tipped the cut and start unit grips and cuts the film and the bale is then unloaded down the bale ramp.
12. Lower the turntable and rotate anticlockwise through 90° and stop with cut and start unit opposite to lift arm.
13. Repeat operations 7 - 12 as required.

NOTE: The film end need only be attached at the start of a roll, after that the sequence is automatic.

### WARNING LIFT ARM

The lift arm on the trailed machine is designed to pick up and deposit bales onto the turntable prior to wrapping and to raise the machine while empty, to facilitate adjustment to sliding axle. It is not intended to be used for transporting bales over distances or for use as a stabiliser whilst wrapping.

Therefore any use of the lift arm outside its primary function will be deemed to be abuse and will void all warranty.

#### FILM OVERLAP SYSTEM

The Autowrap is fitted as standard with the 2 x 2 x 50% film overlap system. This is achieved by means of two indexing quadrants fitted with indexing rollers (see pages 15 & 16) which ensures that the correct number of film layers are applied to the bale after a specific number of revolutions of the turntable. The number of revolutions required to wrap a bale depends on width of film being used and bale size - See table below.

For silage bales we recommend the application of a minimum of four layers of film.

Bale Size	Width of Film Roll	Bale Wrap Indicator Setting (Revs)
120cm x 120cm	500mm	22
120cm x 120cm	750mm	15
120cm x 137cm	500mm	24
120cm x 137cm	750mm	16
120cm x 150cm	500mm	26
120cm x 150cm	750mm	18

#### IMPORTANT

The above recommendations are only offered as a guide to correct wrapping of silage bales and the manufacturer accepts no responsibility for variations that may arise and the consequences of same. They are based upon turntable speeds of up to 25 r.p.m., and a minimum film width of 405mm applied to the Bale when using 500mm wide film roll or a minimum film width of 615mm applied to the bale when using 750mm wide film roll - See Page 5 and 7, proper maintenance of the machine and its correct operation.

It is the responsibility of the operator to ensure the correct number of wraps are applied, as variances can occur with fluctuations in speed of rotation, film quality and tensioning, shape and density of bale etc.

SERVICE AND MAINTENANCE

1. All nuts and bolts should be tightened after some hours in use and thereafter regularly.
2. Wheel pressure should be normally kept at 42 psi depending on bale weight and field conditions.
3. Inspect moving parts for wear on daily basis.
4. Remove hydraulic motor guard daily and clean loose materials from drive pulley and tensioner roller. Replace guard and lock in position while ensuring it does not collide with rotating turntable assembly.

5. Lubrication

Drive chain & sprockets	-	grease every 24 hours
End rollers	-	" " " "
Main rollers	-	" " " "
Hinge pins on Lift Arm	-	" " " "
Hinge pins on main tip frame	-	" " " "
Hydraulic rams	-	" " " "
Wheel Bearings	-	" " " "
Film Reel Assy.	-	" " " "
Dispenser slave roller	-	oil every 24 hours
Dispenser gearboxes	-	grease sparingly each month
Indexing sprocket & pegs	-	grease daily
Main spindle	-	grease every 4000 - 5000 bales

6. Adjustments

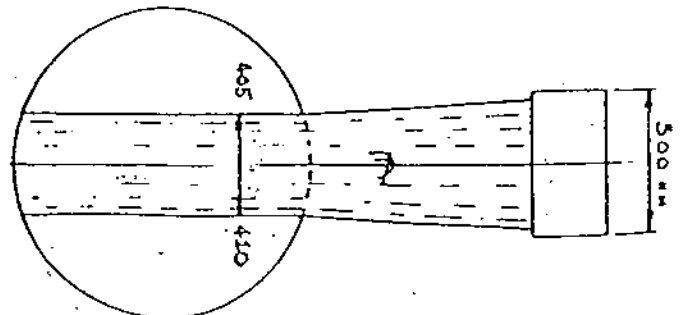
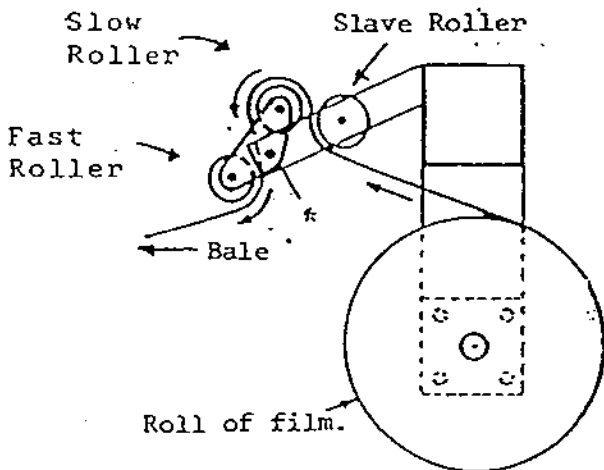
- Drive chain tension : Adjust after first days work then every 50 hours
- Index shaft disc brake : Adjust until bale slippage is minimal
  
- Toothed drive belt : Adjust tension if slippage occurs see page 8
- Main conveyer belt : Tension by moving idler roller up slope being careful to keep it parallel to the main drive roller
  
- Index shaft sprocket clearance : Ensure a gap of 1 - 1.5mm between cam follower and 19 tooth sprocket with machine loaded (750 Kg) See page 10

7. Film Dispenser

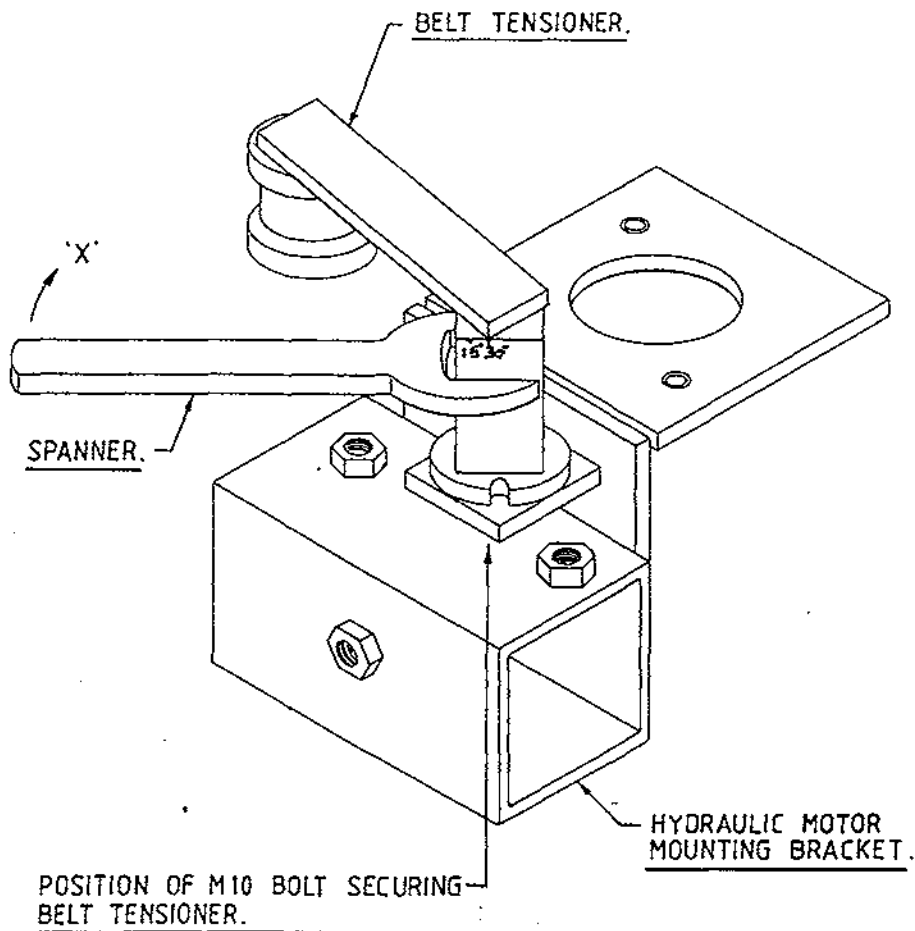
- \* Fit with plunger at top.
- \* Apply One Shot of Multi-Purpose Grease each month to Gearboxes.
- \* Wash Rollers often to avoid build up of Tack from film.
- \* Follow Film Threading Diagram.

8. Film Alignment

- \*Centre of film roll must be in line with centre of bale and the film mast should be vertical.

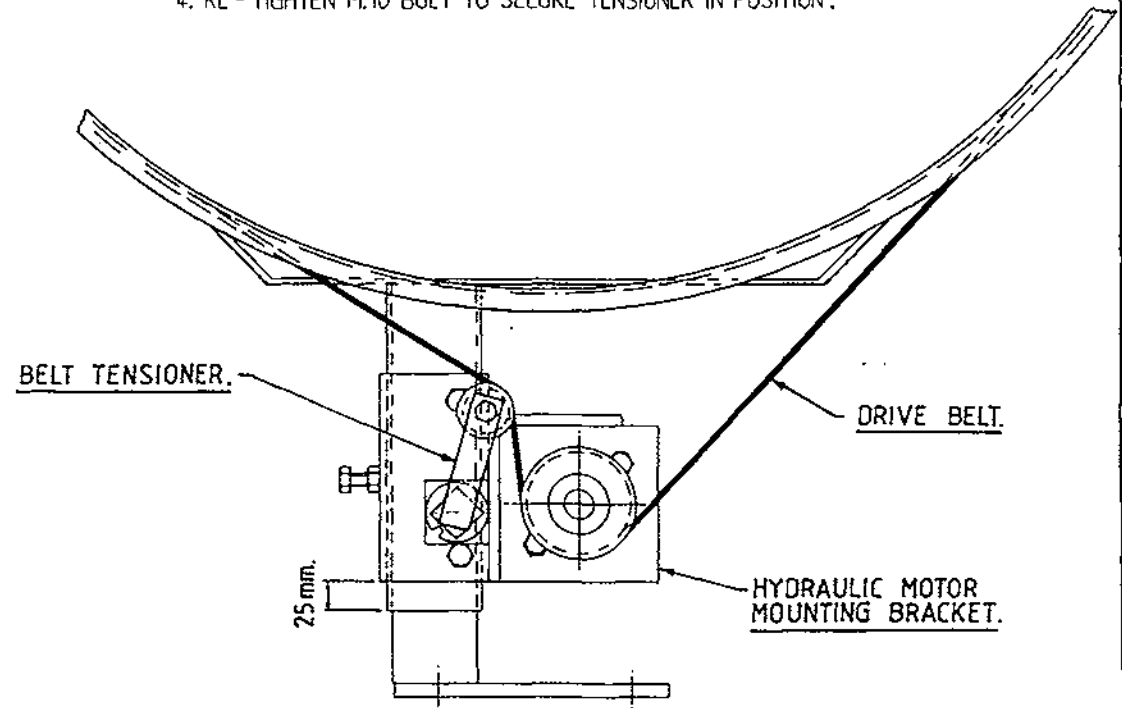


# TANCO AUTOWRAP 1993 DRIVE BELT TENSIONING SYSTEM.



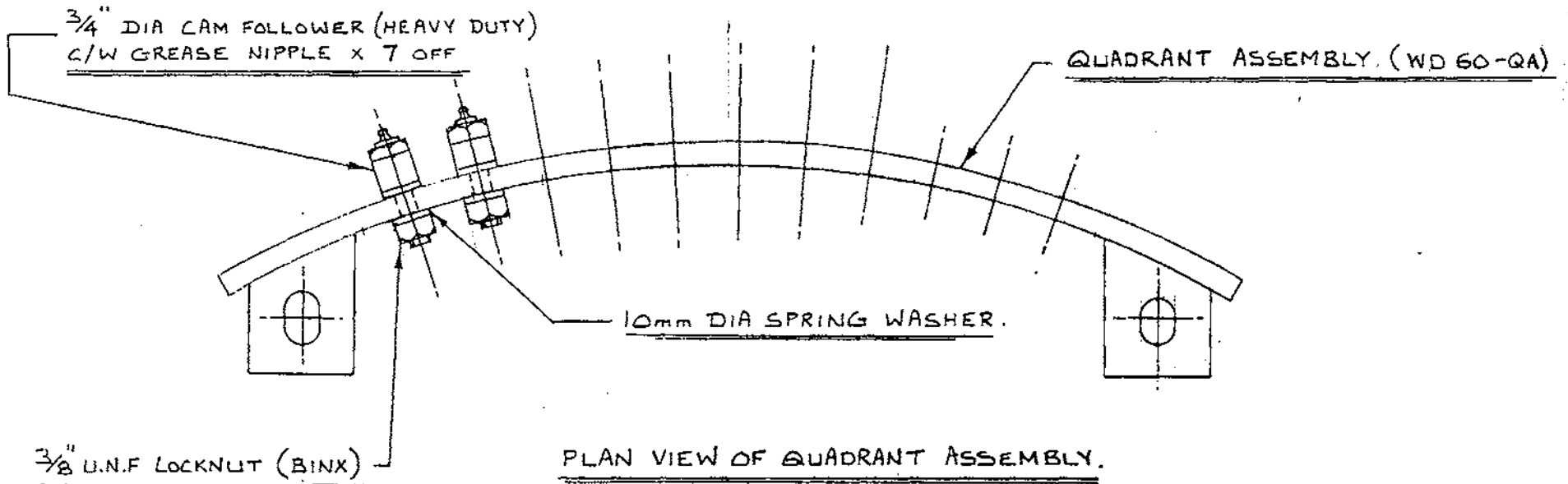
## BELT TENSIONING PROCEDURE

1. CHECK THAT HYDRAULIC MOTOR MOUNTING BRACKET IS SECURED IN POSITION USING 25mm DIMENSION AS SHOWN.
2. LOOSEN M.10 BOLT SECURING BELT TENSIONER.
3. TENSION BELT BY ADJUSTING TENSIONER USING SPANNER IN DIRECTION OF ARROW "X" UNTIL SETTING OF 25" - 30" IS REACHED.
4. RE - TIGHTEN M.10 BOLT TO SECURE TENSIONER IN POSITION.



NOTE:

WHEN FITTING  $\frac{3}{4}$ " DIA CAM FOLLOWERS  
TO QUADRANT ASSEMBLY IT IS NECESSARY  
TO TORQUE NUTS TO 26 FT/Lb.

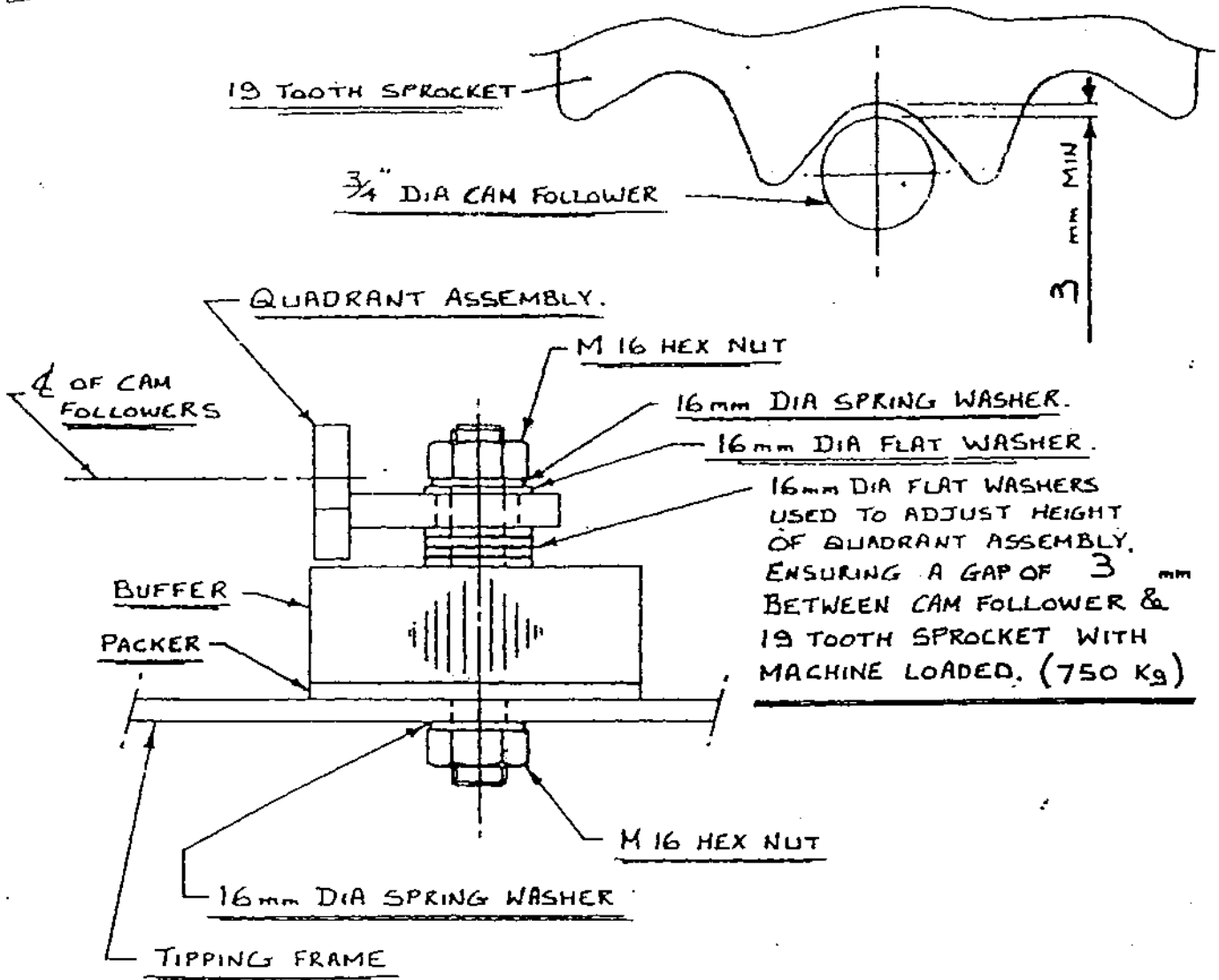


NOTE:

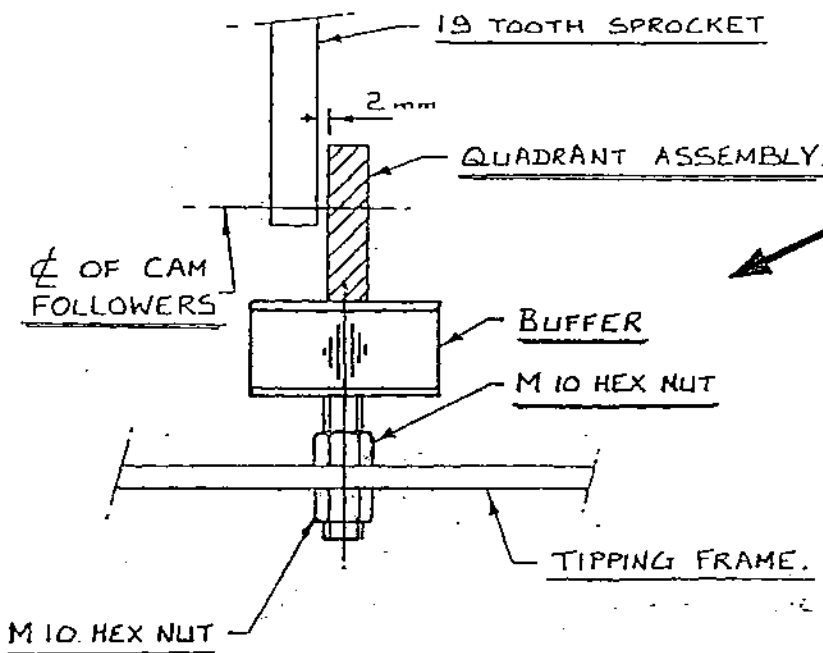
ENSURE THAT M20 HEX Hd BOLT X 110mm  
LONG USED TO MOUNT 4" DIA SUPPORT  
WHEELS ON TURNTABLE ASSEMBLY IS  
POSITIONED WITH BOLT HEAD TO INSIDE  
TO AVOID FOULING  $\frac{3}{4}$ " DIA CAM  
FOLLOWER.

TANCO AUTOWRAP (1993 MODEL)

QUADRANT ASSEMBLY INSTRUCTIONS.



TANCO AUTO WRAP. 1993  
INDEX SHAFT. SPROCKET CLEARANCE ADJUSTMENT.



NOTE:

AFTER SETTING QUADRANT POSITION ADJUST CENTRE BUFFER HEIGHT UNTIL IT TOUCHES LOWER EDGE OF QUADRANT ASSEMBLY AS SHOWN.

# FILM ADAPTOR

## OPERATING INSTRUCTION

500mm wide film rolls are used as standard on 200, 300 & 400 autowrap Models while 750mm wide film rolls are used as standard on 500 model. If however it is found necessary to use 500mm wide rolls along with 750mm film dispenser the following instructions must be adhered to: (NOTE: Failure to do so will result in inadequate wrapping and bale spoilage).

1. Fit film adaptor to top end of 500mm wide film roll as shown opposite (Fig. 1).
2. Shorten length of both brake cams by removing M10 x 30 Bolt Item 12. Slacken M10 x 30 Bolt Item 16, Adjust long brake cam Item 15 in direction shown, so that brake re-engages as sprocket leaves last cam follower. Then tighten M10 x 30 Bolt Item 16.
3. Reduce number of cam followers (Item 3) in each quadrant assembly (Item 2) to 7 off, ensuring that cam followers are removed from correct end of each quadrant assembly. See Fig.2.
4. Adjust height of film mast so that centre of film roll is in line with centre of bale on the turntable.
5. Adjust Bale Wrap indicator setting from 15 to 22 revolutions for 120cm x 120cm bales. (See page 6 for guide to Bale Wrap indicator settings).

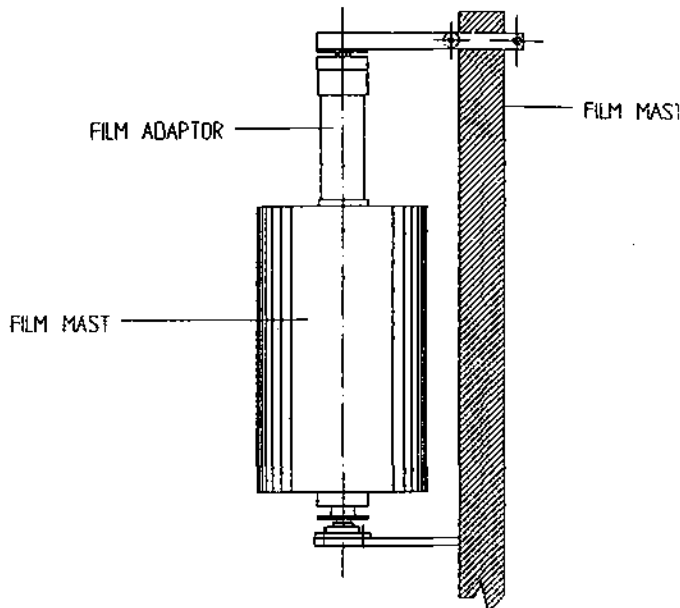
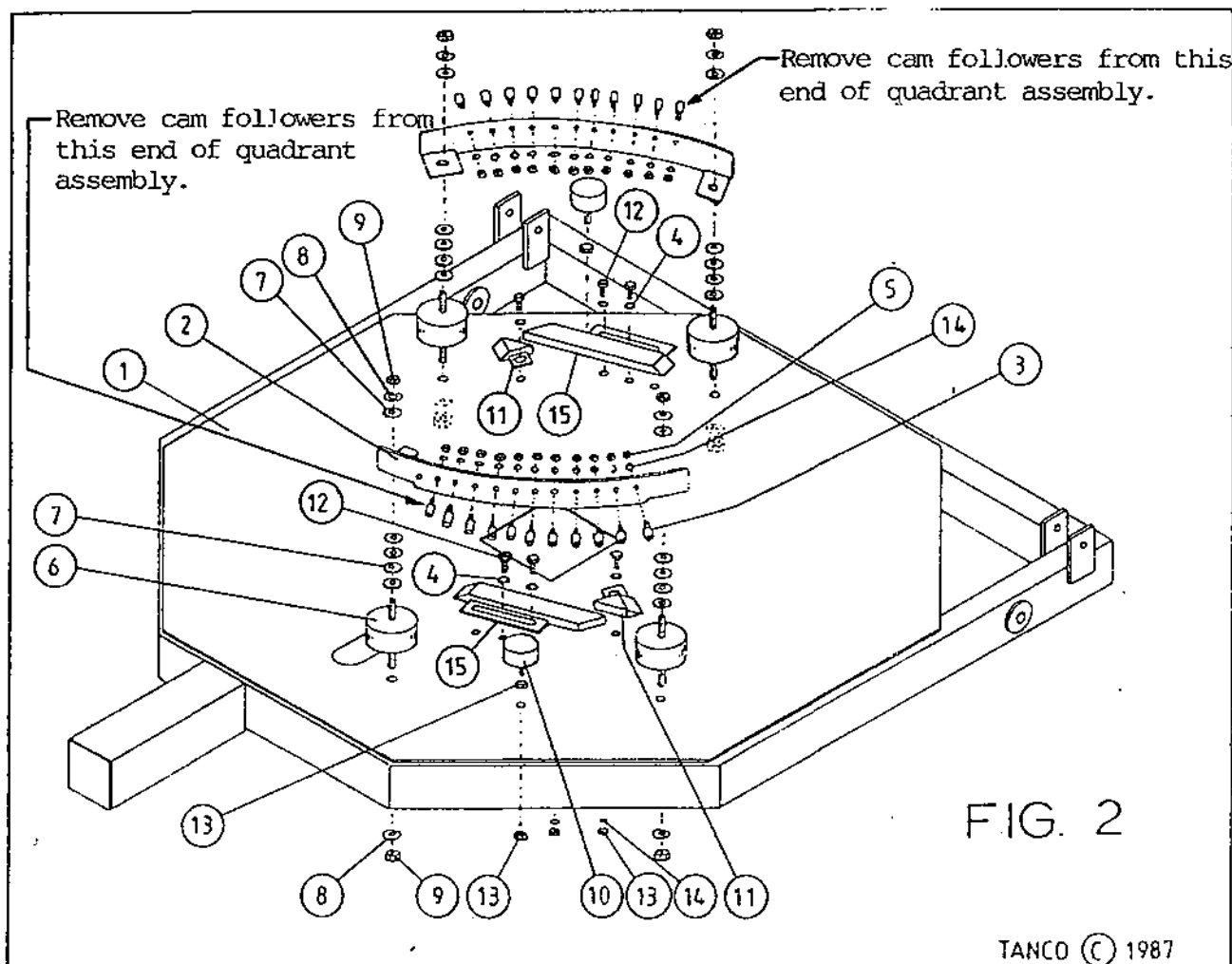


Fig. 1





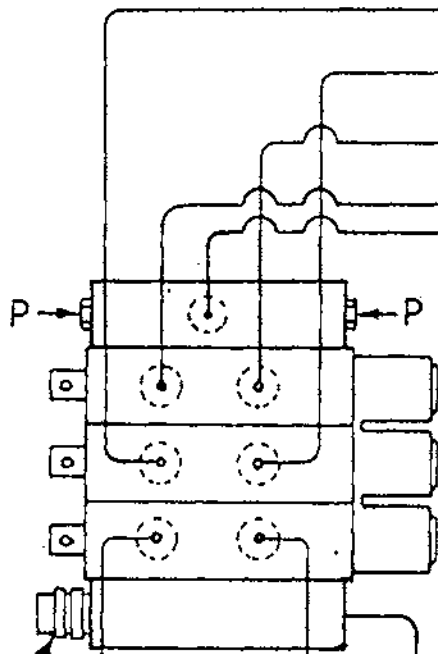
# TANCO AUTOWRAP

## 400 MODEL (TRAILED) HYD. CIRCUIT (DIN) (1993)

TIPPING FRAME  
LIFT RAM



LIFT ARM RAM



MAIN PRESSURE  
RELIEF VALVE.

PRESSURE FEED

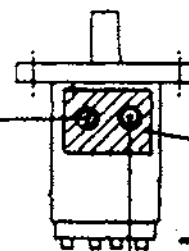
RETURN

NON RETURN VALVE

RETURN LINE

ENSURE THAT RELIEF VALVE ACTS  
ON RETURN LINE FROM HYD. MOTOR

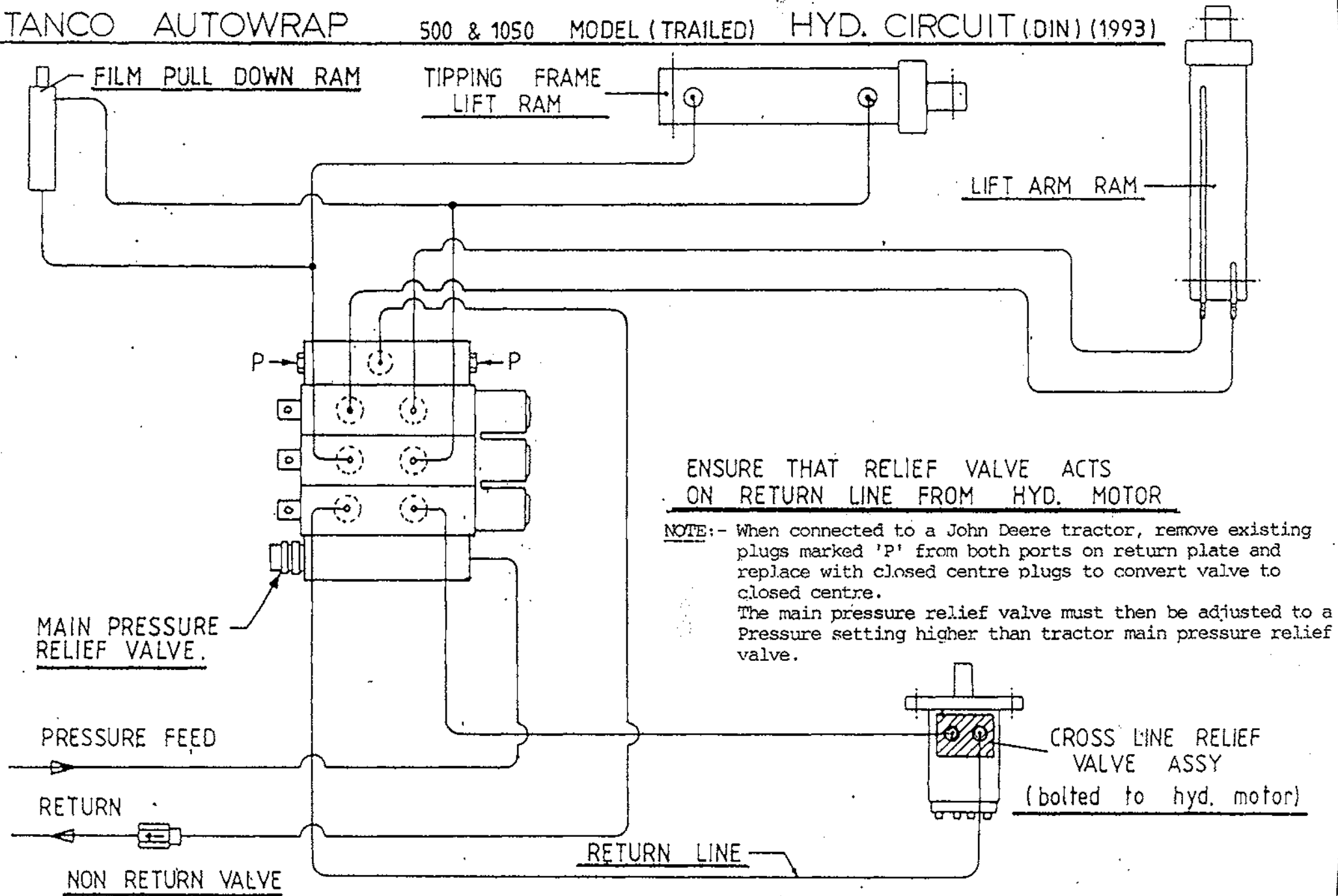
NOTE:- When connected to a John Deere tractor, remove existing plugs marked 'P' from both ports on return plate and replace with closed centre plugs to convert valve to closed centre.  
The main pressure relief valve must then be adjusted to a Pressure setting higher than tractor main pressure relief valve.



CROSS LINE RELIEF  
VALVE ASSY  
(bolted to hyd. motor)

# TANCO AUTOWRAP

500 & 1050 MODEL (TRAILED) HYD. CIRCUIT (DIN) (1993)



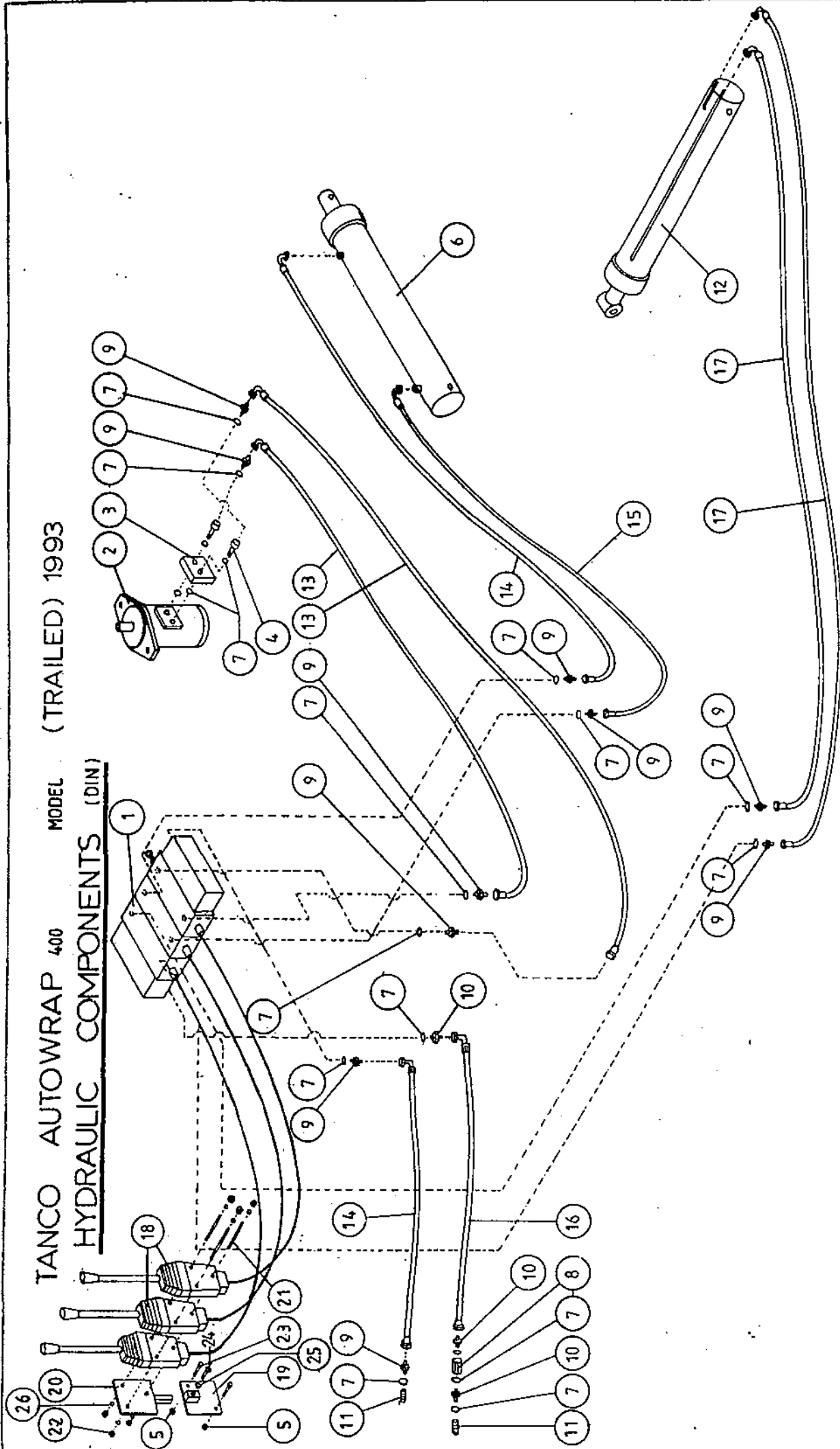
157



TANCO AUTOWRAP 400 (TRAILED) 1993

MODEL

HYDRAULIC COMPONENTS (DIN)



TANCO AUTOWRAP 400 MODEL (TRAILED) 1993

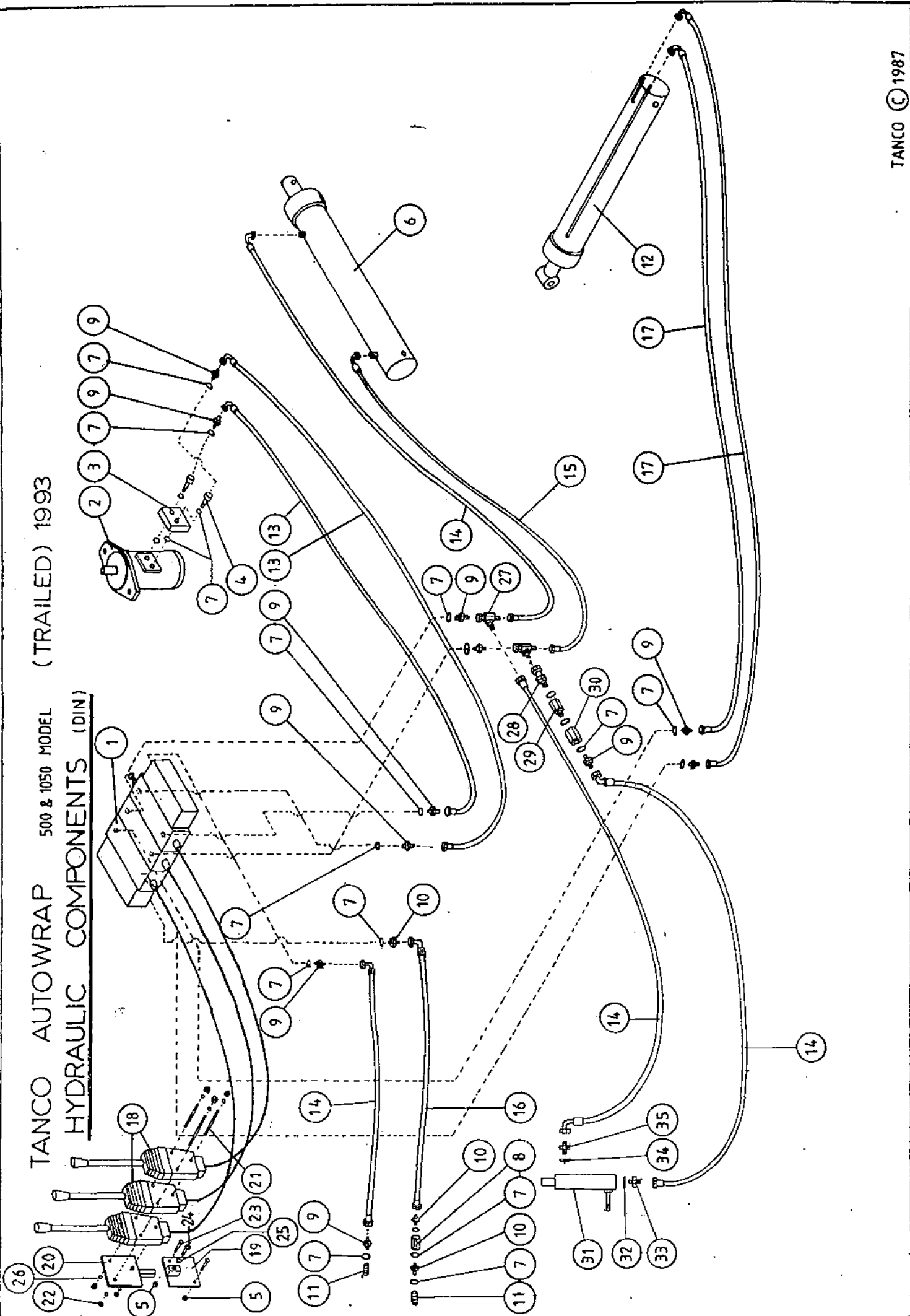
HYDRAULIC COMPONENTS (DIN)

PARTS LIST

<u>ITEM NO.</u>	<u>DESCRIPTION</u>	<u>QTY.</u>	<u>PART NO.</u>
1.	3 BANK SPOOL VALVE (DIN) C/W LEVERS	1	Z01-03-018D
2.	HYDRAULIC MOTOR (C.L.)	1	Z01-02-AR75
3.	CROSS LINE RELIEF VALVE	1	Z01-03-002
4.	1/2" BSP BOTTOM BANJO BOLT (SPECIAL)	2	
5.	M10 LOCKNUT	2	Z23-10
6.	HYD. RAM (FOR TIPPING FRAME)	1	Z01-01-AR687
7.	1/2" DOWTY WASHER	18	Z01-04-03
8	1/2" NON RETURN VALVE	1	Z01-03-017
9.	1/2" x 3/8" ADAPTOR	10	Z01-06-06-08
10.	1/2" x 1/2" ADAPTOR	3	Z01-06-08-08
11.	1/2" MALE END Q/R COUPLING	2	Z01-15-081
12.	HYD. RAM (FOR LIFT ARM)	1	Z01-01-AW
13.	96" ST/90 3/8" D/W HOSE	2	Z38-R2-96-S9
14.	84" ST/90 3/8" D/W HOSE	2	Z38-R2-84-S9
15.	72" ST/90 3/8" D/W HOSE	1	Z38-R2-72-S9
16.	84" ST/90 1/2" S/W HOSE	1	Z12-R1-84-S9
17.	120" ST/90 3/8" D/W HOSE	2	Z38-R2-120S9
18.	3 1/2" METER CABLE C/W ACTUATOR	3	Z004-03-0075 Z004-03-009 Z004-03-014
19.	ACTUATOR MTG. BRACKET BOTTOM HALF	1	WD60-AMBB
20.	ACTUATOR MTG. BRACKET TOP HALF	1	WD60-AMBT/WSB150
21.	TIE BOLT (M8 x 150mm LONG)	3	
22.	M8 HEX NUT	6	Z18-08
23.	M10 HEX HD. SETS x 40mm LONG	2	Z26-064S
24.	M12 HEX HD. SET X 30mm LONG	1	Z26-082S
25.	M12 HEX NUT	1	Z18-12
26.	8mm DIA SPRING WASHER	6	Z12-02-08

TANCO AUTOWRAP 500 & 1050 MODEL (TRAILED) 1993

HYDRAULIC COMPONENTS (DIN)

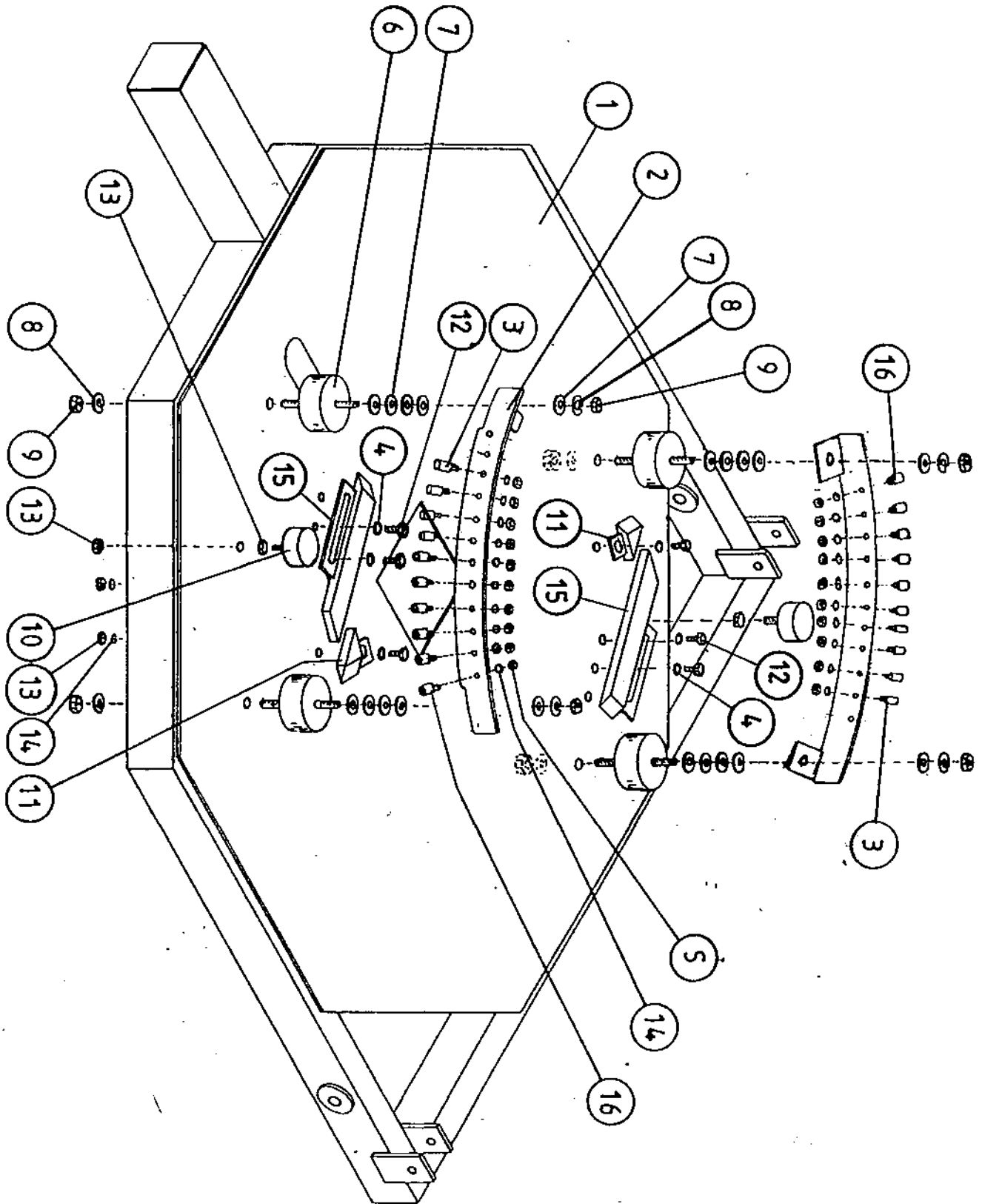


HYDRAULIC COMPONENTS (DIN)PARTS LIST

<u>ITEM NO.</u>	<u>DESCRIPTION</u>	<u>QTY.</u>	<u>PART NO.</u>
1.	3 BANK SPOOL VALVE (DIN) C/W LEVERS	1	Z01-03-018D
2.	HYDRAULIC MOTOR (C.L.)	1	Z01-02-AR75
3.	CROSS LINE RELIEF VALVE	1	Z01-03-002
4.	1/2" BSP BOTTOM BANJO BOLT (SPECIAL)	2	
5.	M10 LOCKNUT	2	Z23-10
6.	HYD. RAM (FOR TIPPING FRAME)	1	Z01-01-AR687
7.	1/2" DOWTY WASHER	21	Z01-04-03
8.	1/2" NON RETURN VALVE	1	Z01-03-017
9.	1/2" x 3/8" ADAPTOR	11	Z01-06-06-08
10.	1/2" x 1/2" ADAPTOR	3	Z01-06-08-08
11.	1/2" MALE END Q/R COUPLING	2	Z01-15-081
12.	HYD. RAM (FOR LIFT ARM)	1	Z01-01-AW
13.	96" ST/90 3/8" D/W HOSE	2	Z38-R2-96-S9
14.	84" ST/90 3/8" D/W HOSE	4	Z38-R2-84-S9
15.	72" ST/90 3/8" D/W HOSE	1	Z38-R2-72-S9
16.	84" ST/90 1/2" S/W HOSE	1	Z12-R1-84-S9
17.	120" ST/90 3/8" D/W HOSE	2	Z38-R2-120S9
18.	3 1/2" METER CABLE C/W ACTUATOR	3	Z004-03-0075 Z004-03-009 Z004-03-014
19.	ACTUATOR MTG. BRACKET BOTTOM HALF	1	WD60-AMBB
20.	ACTUATOR MTG. BRACKET TOP HALF	1	WD60-AMBT/WSB150
21.	TIE BOLT (M8 x 150mm LONG)	3	
22.	M8 HEX NUT	6	Z18-08
23.	M10 HEX HD. SETS x 40mm LONG	2	Z26-064S
24.	M12 HEX HD. SET X 30mm LONG	1	Z26-082S
25.	M12 HEX NUT	1	Z18-12
26.	8mm DIA SPRING WASHER	6	Z12-02-08
27.	3/8" FEMALE x 1/2" MALE/MALE "T" PIECE	2	Z01-12-002
28.	3/8" FEMALE x 1/2" MALE ADAPTOR	1	Z01-05-06-08
29.	0.060 RESTRICTOR	1	Z01-03-40
30.	1/2" FEMALE x 1/2" FEMALE ADAPTOR	1	WI60-120
31.	HYDRAULIC RAM D/A	1	Z01-01-AW25
32.	3/8" DOWTY WASHER	1	Z01-01-02
33.	3/8" x 3/8" ADAPTOR	1	Z01-06-06-05
34.	1/4" DOWTY WASHER	1	Z01-04-01
35.	1/4" x 3/8" ADAPTOR	1	Z01-06-04-06

# TANCO AUTOWRAP 1993

## INDEXING QUADRANT ASSY (50% OVERLAP WITH 750mm WIDE FILM ROLL)





TANCO AUTOWRAP 500S8 1993

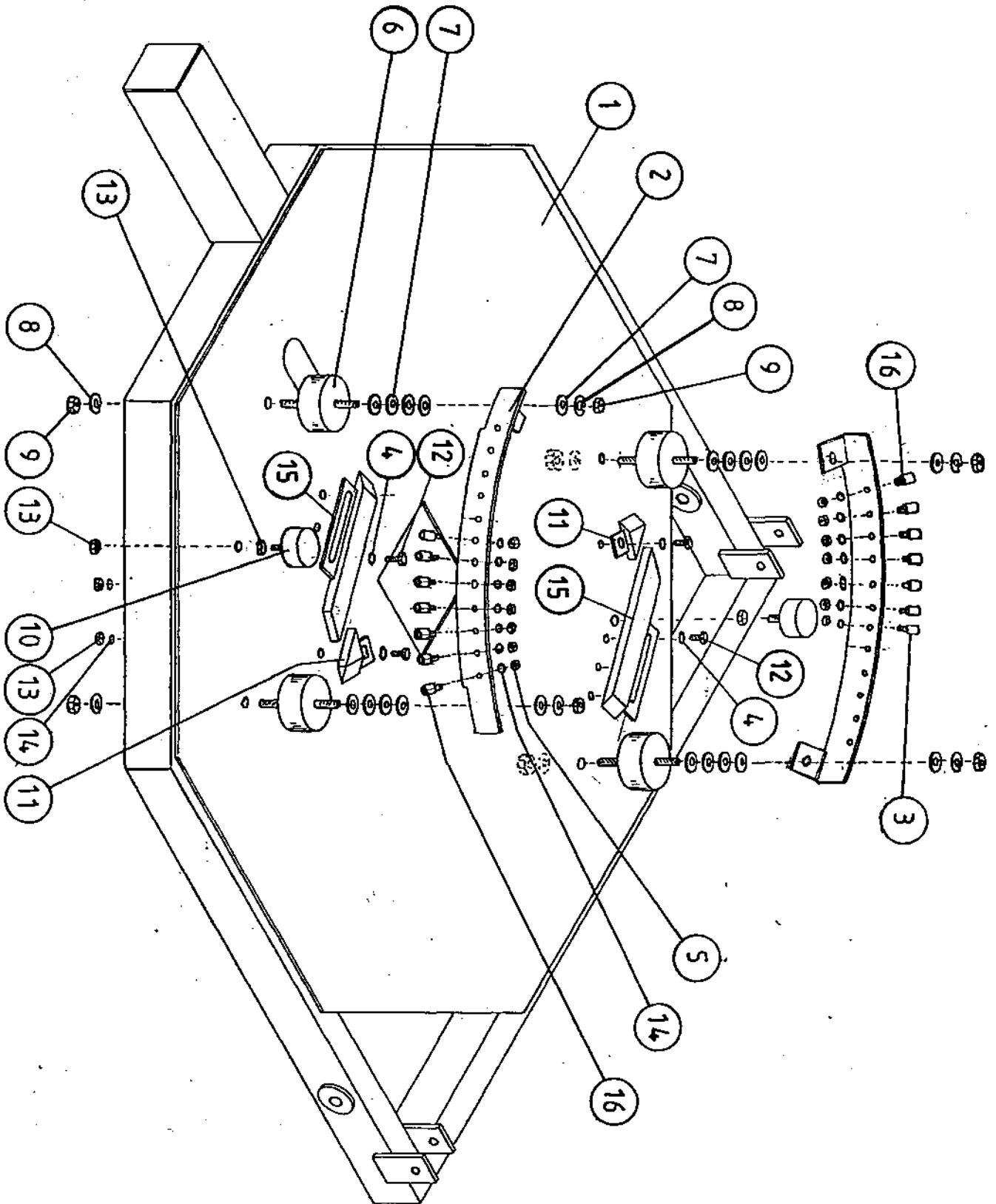
PARTS LIST

INDEXING QUADRANT ASSEMBLY (50% OVERLAP WITH 750MM WIDE FILM ROLL)

<u>ITEM NO.</u>	<u>DESCRIPTION</u>	<u>QTY.</u>	<u>PART NO</u>
1.	TIPPING FRAME ASSY.	1	WD60-TF
2.	QUADRANT ASSY.	2	WD60-QA
3.	3/4" DIA CAM FOLLOWER (HEAVY DUTY) C/W GREASE NIPPLE	18	Z06-425
4.	10mm DIA FLAT WASHERS	6	Z11-02-10
5.	3/8" UNF LOCKNUTS (BINX)	20	Z20-12
6.	RUBBER BUFFER 100mm DIA x 40mm LONG	4	Z40-22
7.	16mm DIA FLAT WASHERS	20	Z10-02-16
8.	16mm DIA SPRING WASHERS	8	Z12-02-16
9.	M16 HEX NUT	8	Z18-16
10.	RUBBER BUFFER 50mm DIA x 25mm LONG	2	Z40-23
11.	CAM ASSY (SHORT)	2	WD623-CAS
12.	M10 HEX HD SET x 30mm LONG	6	Z26-062S
13.	M10 HEX NUT	8	Z18-10
14.	10mm DIA SPRING WASHER	24	Z12-02-10
15.	CAM ASSY (LONG)	2	WD623-CAL
16.	1" DIA CAM FOLLOWER C/W GREASE NIPPLE	2	Z06-426

# TANCO AUTOWRAP 1993

## INDEXING QUADRANT ASSY (50% OVERLAP WITH 500mm WIDE FILM ROLL)

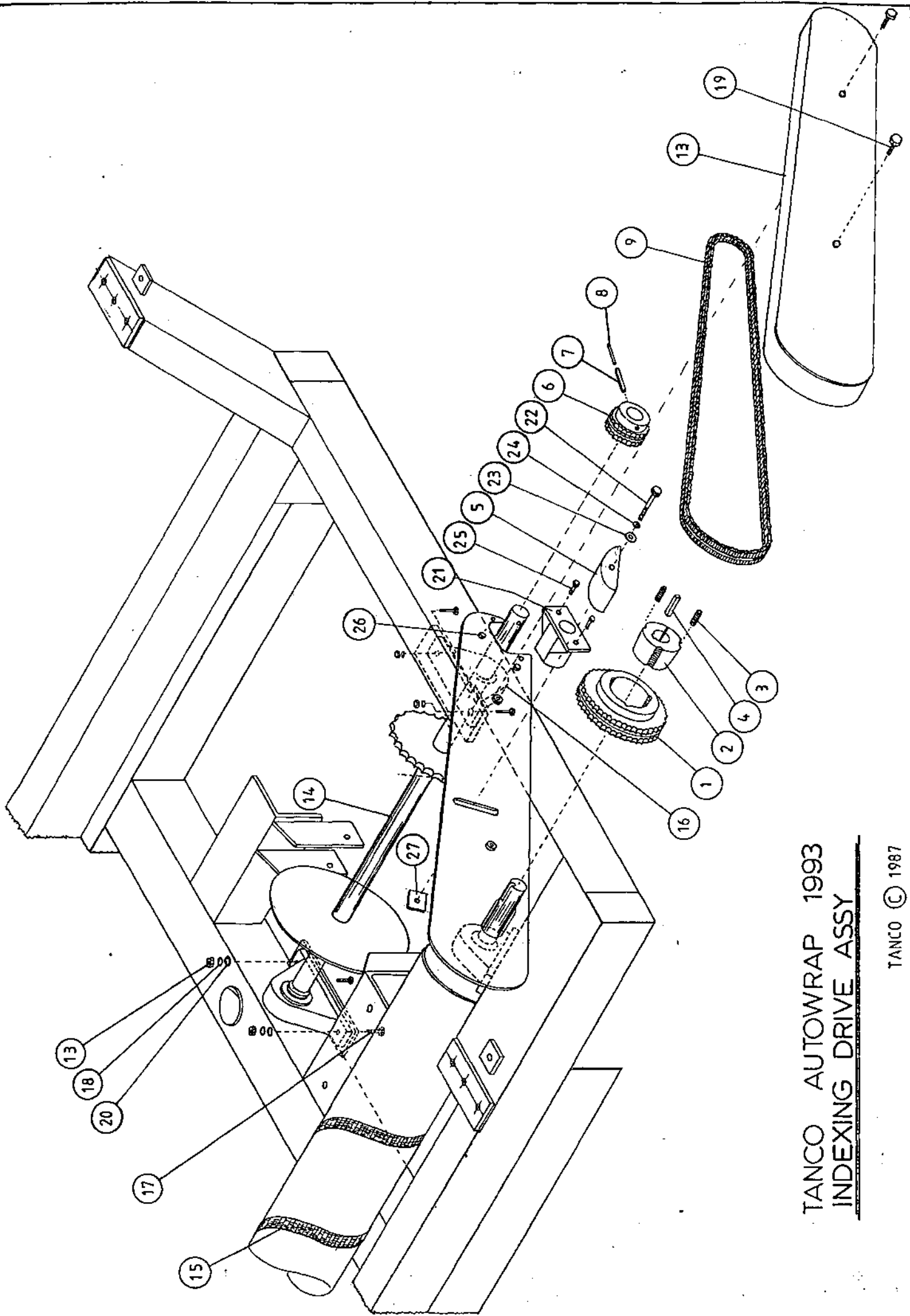


TANCO AUTOWRAP 400S8 MODEL 1993

PARTS LIST

INDEXING QUADRANT ASSEMBLY (50% OVERLAP WITH 500MM WIDE FILM ROLL)

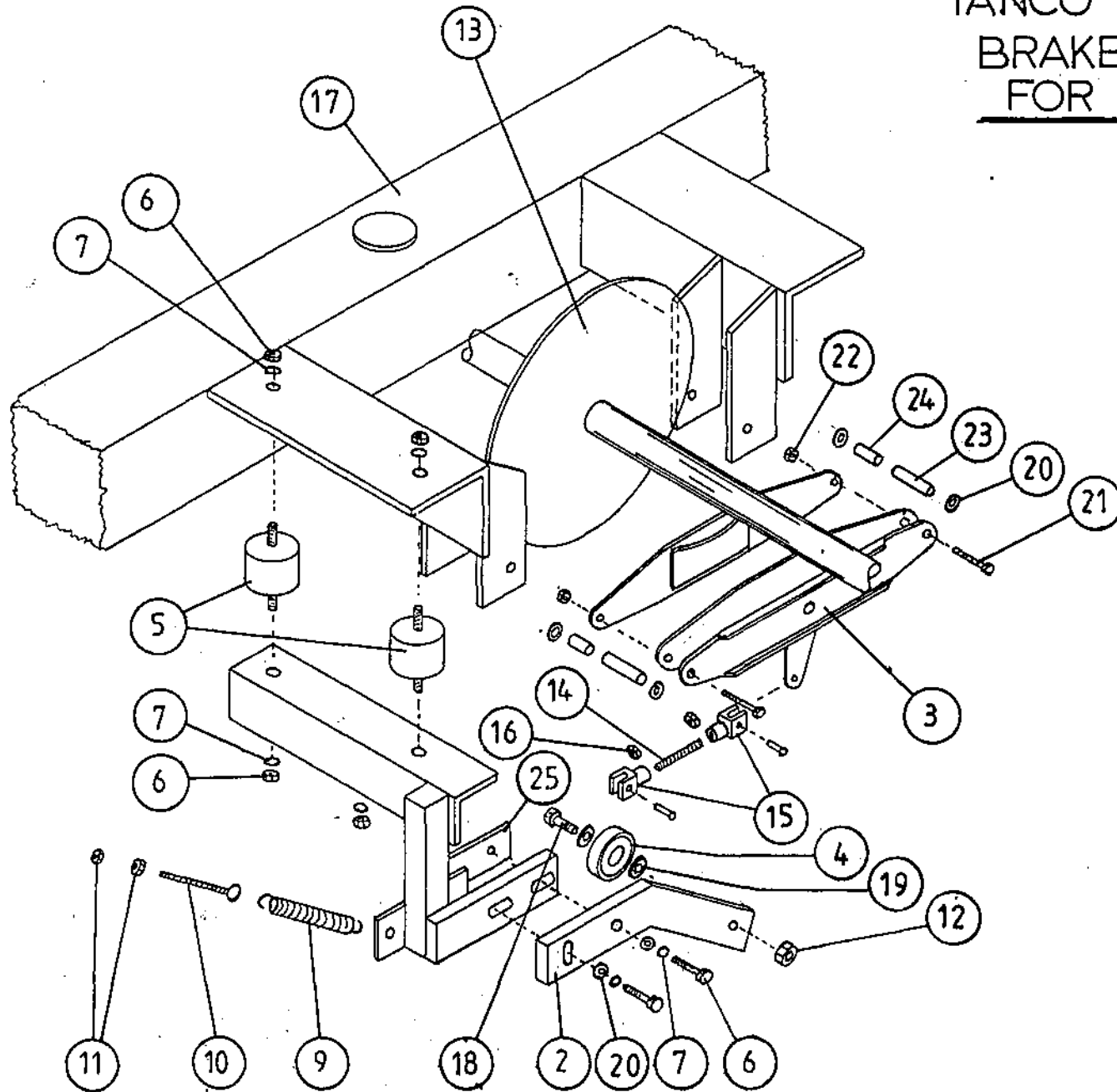
<u>ITEM NO.</u>	<u>DESCRIPTION</u>	<u>QTY.</u>	<u>PART NO.</u>
1.	TIPPING FRAME ASSY.	1	WD60-TF
2.	QUADRANT ASSY.	2	WD623-QA
3.	3/4" DIA CAM FOLLOWER (HEAVY DUTY) C/W GREASE NIPPLE	12	Z06-425
4.	10mm DIA FLAT WASHERS	3	Z11-02-10
5.	3/8" UNF LOCKNUTS (BINX)	14	Z20-12
6.	RUBBER BUFFER 100mm DIA x 40mm LONG	2	Z40-22
7.	16mm DIA FLAT WASHERS	10	Z10-02-16
8.	16mm DIA SPRING WASHERS	4	Z12-02-16
9.	M16 HEX NUT	4	Z18-16
10.	RUBBER BUFFER 50mm DIA x 25mm LONG	1	Z40-23
11.	CAM ASSY (SHORT)	1	WD623-CAS
12.	M10 HEX HD SET x 30mm LONG	3	Z26-062S
13.	M10 HEX NUT	5	Z18-10
14.	10mm DIA SPRING WASHER	17	Z12-02-10
15.	CAM ASSY. (LONG)	1	WD623-CAL
16.	1" DIA CAM FOLLOWER C/W GREASE NIPPLE	2	Z06-426



TANCO AUTOWRAP 1993  
INDEXING DRIVE ASSY



TANCO AUTOWRAP 1993  
BRAKE ARRANGEMENT  
FOR INDEXING SHAFT



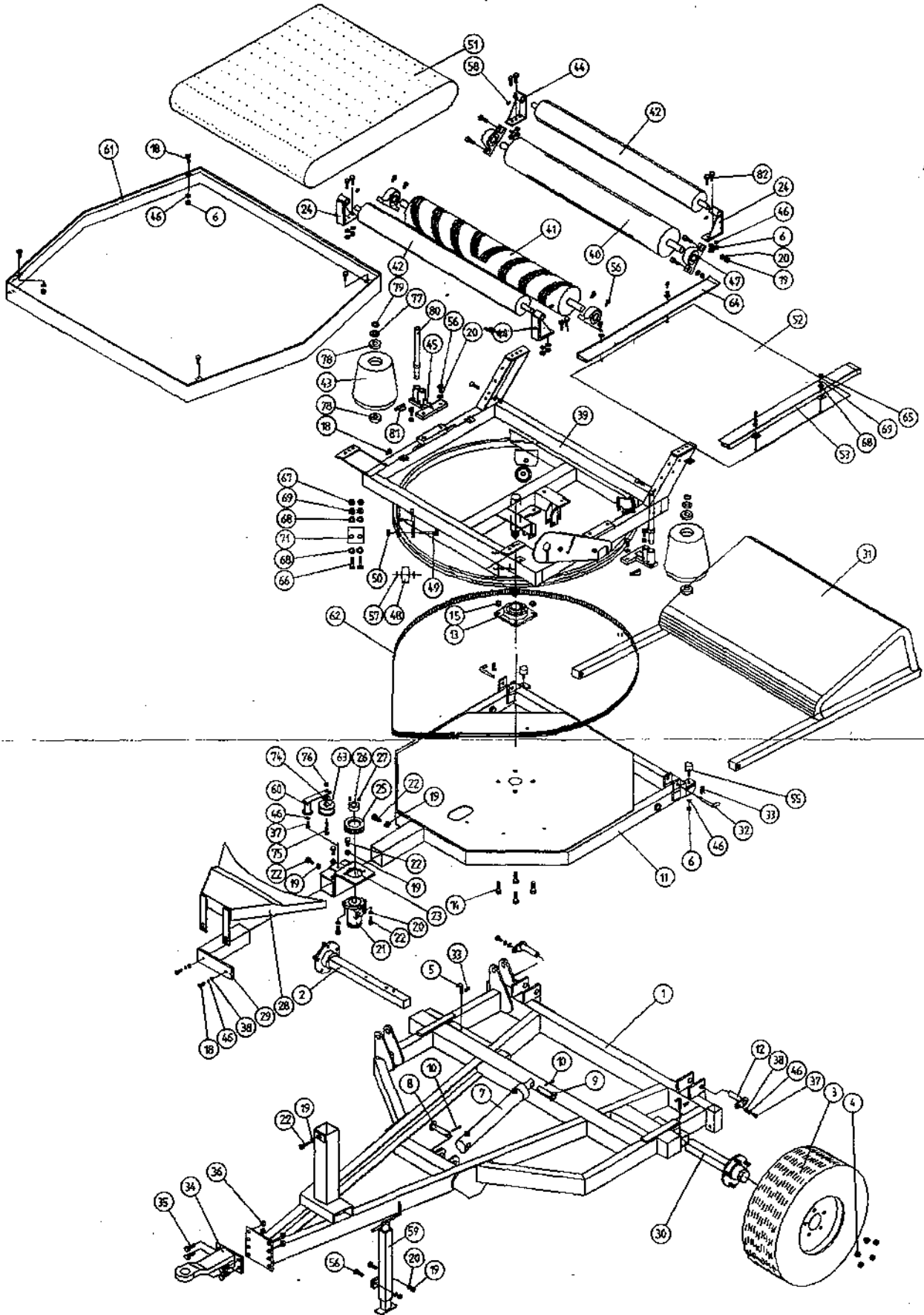
TANCO AUTOWRAP 1993

BRAKE ARRANGEMENT FOR INDEXING SHAFT

PARTS LIST

<u>ITEM NO.</u>	<u>DESCRIPTION</u>	<u>QTY.</u>	<u>PART NO.</u>
1.	CAM FOLLOWER MOUNTING BRACKET (UPPER)	1	WD60-CFMB
2.	CAM FOLLOWER MOUNTING BRACKET (LOWER)	1	WD60-804
3.	CALIPER DISC BRAKE UNIT	1	Z49-92
4.	BALL BEARING (6301)	1	Z06-43
5.	RUBBER BUFFER 50mm DIA x 30 LONG TYPE A 57 SHORE	2	Z40-21
6.	M10 HEX NUTS	4	Z18-10
7.	10mm DIA SPRING WASHERS	6	Z12-02-10
8.	M10 HEX HD SET x 40 LONG	2	Z26-064S
9.	TENSION SPRING	1	Z07-05
10.	EYE BOLT (M8)	1	WD60-EB
11.	M8 HEX NUTS	2	Z18-08
12.	M12 LOCKNUT	1	Z23-12
13.	SPROCKET/SHAFT ASSY	1	WD65-SPR
14.	5/16" UNF THREADED BAR x 90mm LONG	1	WD60-806
15.	5/16" UNF CLEVIS C/W PIN & CLIP	2	Z49-33
16.	5/16" UNF HEX NUT	2	Z15-05
17.	TURN TABLE	1	WD60-TA
18.	M12 HEX HD. SETS x 40mm LONG	1	Z26-0845
19.	12mm DIA FLAT WASHER	2	Z11-02-12
20.	10mm DIA FLAT WASHER	7	Z11-02-10
21.	3/8" UNF HEX HD. BOLT x 3" LONG	2	Z31B-102
22.	3/8" UNF LOCK NUT	2	Z15-06
23.	SPACER 1/2" O.D. x 13/32" I.D. x 1 1/2" LONG	2	
24.	SPACER 1/2" O.D. x 13/32" I.D. x 1/2" LONG	2	
25.	Clamping Plate		WD60-836

# TANCO AUTOWRAP 400S8 / 500S8 MODEL 1993



FILE NAME: WD 658 PL 1



TANCO AUTOWRAP 400S8/500S8 MODEL (TRAILED) 1993

PARTS LIST

<u>ITEM NO.</u>	<u>DESCRIPTION</u>	<u>QTY.</u>	<u>PART NO.</u>
1.	CHASSIS ASSY	1	WD60-CHA
2.	STUB AXLE (LONG)	1	Z04-033
3.	WHEELS	2	Z04-03
4.	WHEEL NUTS	10	Z04-0331
5.	BISSEL PIN	2	Z03-22-AW82
6.	M10 HEX NUT	18	Z18-10
7.	HYD. RAM	1	Z01-01-AR687
8.	RAM BOTTOM PIVOT PIN	1	Z03-02-330
9.	RAM TOP PIVOT PIN	1	Z03-03-50
10.	2" x 1/4" SPLIT PIN	2	Z03-21-29
11.	TIPPING FRAME ASSY.	1	WD60-TF
12.	TIPPING FRAME PIVOT PIN C/W GREASE NIPPLE	2	Z03-01-905 Z39-60
13.	2" DIA FLANGE BEARING	1	Z06-49
14.	5/8" UNF HEX HD.SET x 2" LONG	4	Z30B-064
15.	5/8" UNF LOCKNUTS	4	Z20-10
18.	M10 HEX HD SET x 30mm LONG	10	Z26-062S
19.	M12 HEX NUT	16	Z18-12
20.	12mm DIA SPRING WASHER	14	Z12-02-12
21.	HYD.MOTOR C.L.	1	Z01-02-AR75
22.	M12 HEX HD SETS x 30mm LONG	7	Z26-082S
23.	HYD. MOTOR MOUNTING ASSY.	1	WD60-HMB
24.	ROLLER MOUNTING BRACKET	2	WD60-TRMBL
25.	4"DIA x 1/2" PITCH TOOTHED PULLEY	1	Z09-005-AW1
26.	TAPER LOCK BUSH TO SUIT 1" DIA SHAFT	1	Z09-005-AW2
27.	M10 STUDS X 15mm	2	Z28-01
28.	HYD. MOTOR GUARD ASSY	1	WD60-HMG
29.	HYDRAULIC MOTOR GUARD MOUNTING BRACKET	1	WD60-HAMB
30.	STUB AXLE (SHORT)	1	Z04-032
31.	BALE RAMP ASSY	1	WD60-BR
32.	BISSEL PIN	2	Z03-22-AW100
33.	4mm "R" CLIP	3	Z36-02



TANCO AUTOWRAP 400S8 & 500S8 MODEL (TRAILED) 1993PARTS LIST

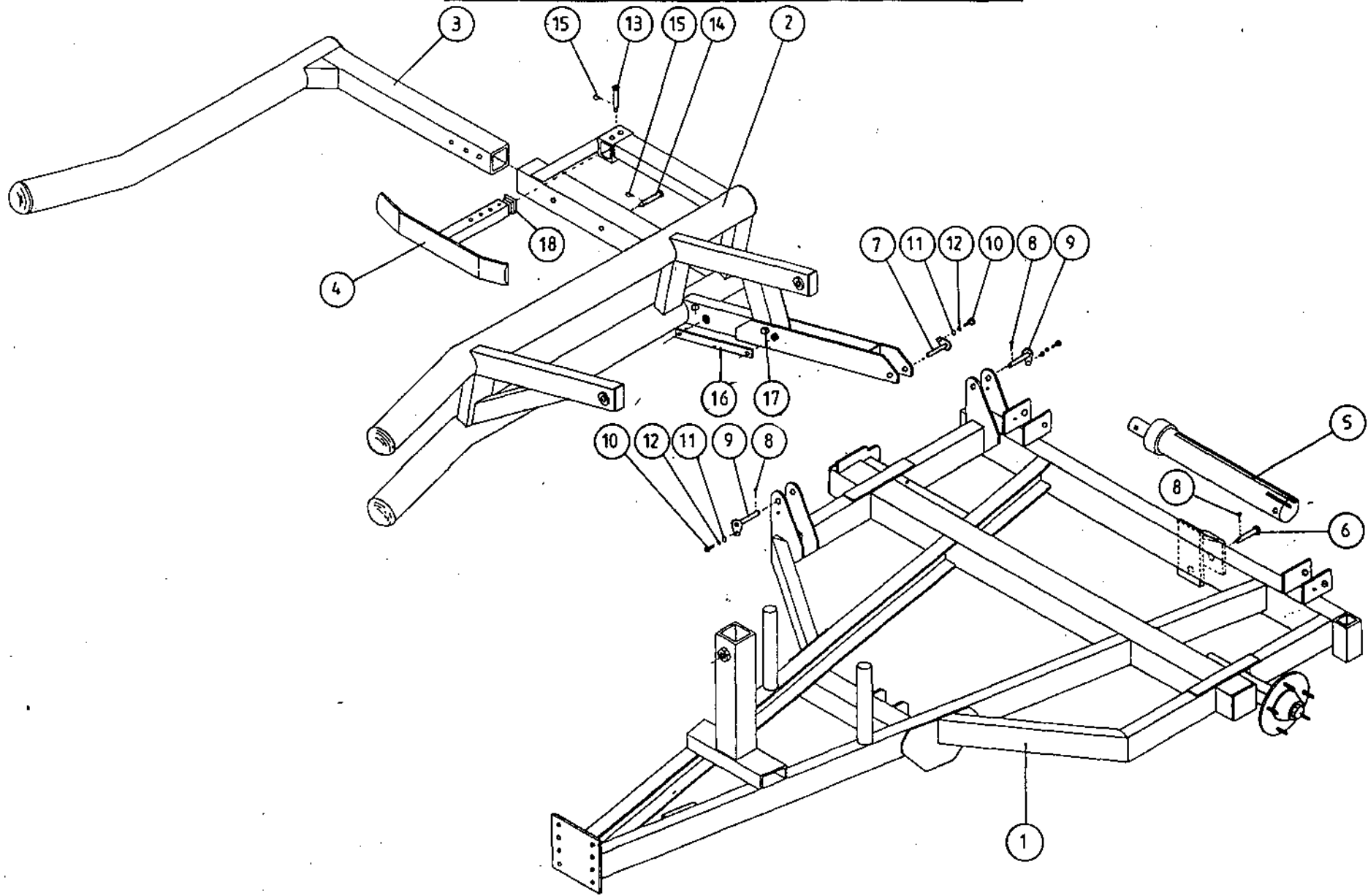
<u>ITEM NO.</u>	<u>DESCRIPTION</u>	<u>QTY.</u>	<u>PART NO.</u>
34.	HITCH ASSY.	1	WD65-HIT
35.	M16 HEX HD. SET x 45mm LONG	4	Z26-123S
36.	M16 LOCKNUTS	4	Z23-16
37.	M10 HEX HD. SET x 25mm LONG (TUFLOCK)	3	Z26S-061
38.	10mm DIA MACHINED FLAT WASHER	4	Z11-02-10
39.	TURN TABLE ASSY.	1	WD60-TA
40.	BIG ROLLER ASSY IDLER	1	WD610-BRI
41.	BIG ROLLER ASSY. DRIVER	1	WD658-BRD
42.	SMALL ROLLER ASSY.	2	WD60-SMR
43.	SIDE ROLLER	2	Z06-AWR
44.	ROLLER MTG. BRACKET	2	WD60-TRMBR
45.	END ROLLER MOUNTING BRACKET	2	WD658-ERM
46.	10mm DIA SPRING WASHERS	23	Z12-02-10
47.	1 1/4" PILLOW BLOCK BEARING C/W CAM LOCK COLLAR	4	Z06-485
48.	SUPPORT WHEELS (4" DIA)	4	Z06-466
49.	AXLE ASSY. C/W GREASE NIPPLE	4	Z03-22-AW/AX Z39-60
50.	M20 LOCKNUTS	4	Z23-20
51.	130mm WIDE x 2450mm LONG x 1/4" FLAT BELT	1	Z05-02-AWS
52.	TURN TABLE COVER PLATE	1	WD60-093
53.	BELT GUIDE ASSY.	1	WD658-BG1
55.	BUFFER 50mm DIA x 40mm LONG	2	Z40-20
56.	M12 HEX HD. SETS x 40mm LONG	14	Z26S-084
57.	SPACER	8	WD60-198
58.	1/8" B.S.P. ST GREASE NIPPLE	4	Z39-60
59.	SCREW JACK ASSEMBLY	1	WD60-JA
60.	ROSTA TENSIONING UNIT ARM	1	Z06-454
61.	MAIN GUARD ASSY.	1	WD60-MG
62.	170" LONG x 1/2 PITCH x 1" WIDE TOOTHED BELT	1	Z05-02-AW2
63.	STEPPED ROLLER C/W BEARINGS	1	Z06-456



TANCO AUTOWRAP 400 S8/500 S8 MODEL (TRAILED) 1993PARTS LIST

<u>ITEM NO.</u>	<u>DESCRIPTION</u>	<u>QTY.</u>	<u>PART NO.</u>
64.	BELT GUIDE ASSY	1	WD658-BG2
65.	M8 HEX HD SET X 25MM LONG	4	Z26-040S
66.	M8 HEX HD SETS x 20mm LONG	14	Z26-039S
67.	M8 HEX NUTS	10	Z18-08
68.	8mm DIA FLAT WASHERS (MUD FLAP)	20	Z11-02-081
69.	8mm DIA SPRING WASHERS	14	Z12-02-08
71.	SCRAPER	2	WD60-70S
74	SPACER	1	Z18-12
75.	M10 HEX HD BOLT x 60mm LONG	1	Z26-067B
76.	M10 LOCKNUT	1	Z23-10
77.	THRUST WASHER	2	WD60-292
78.	BEARING (25mm I.D.)	4	Z06-433
79.	CIRCLIP	2	Z29-75
80.	ROLLER SHAFT ASSEMBLY	2	WD60-RSA
81.	10mm "D" LINCH PINS	2	Z38-03
82.	M10 HEX HD SET x 35mm LONG	8	Z26-063S

TANCO AUTOWRAP LIFT ARM & CHASSIS  
400 & 500 MODEL (TRAILED) 1993



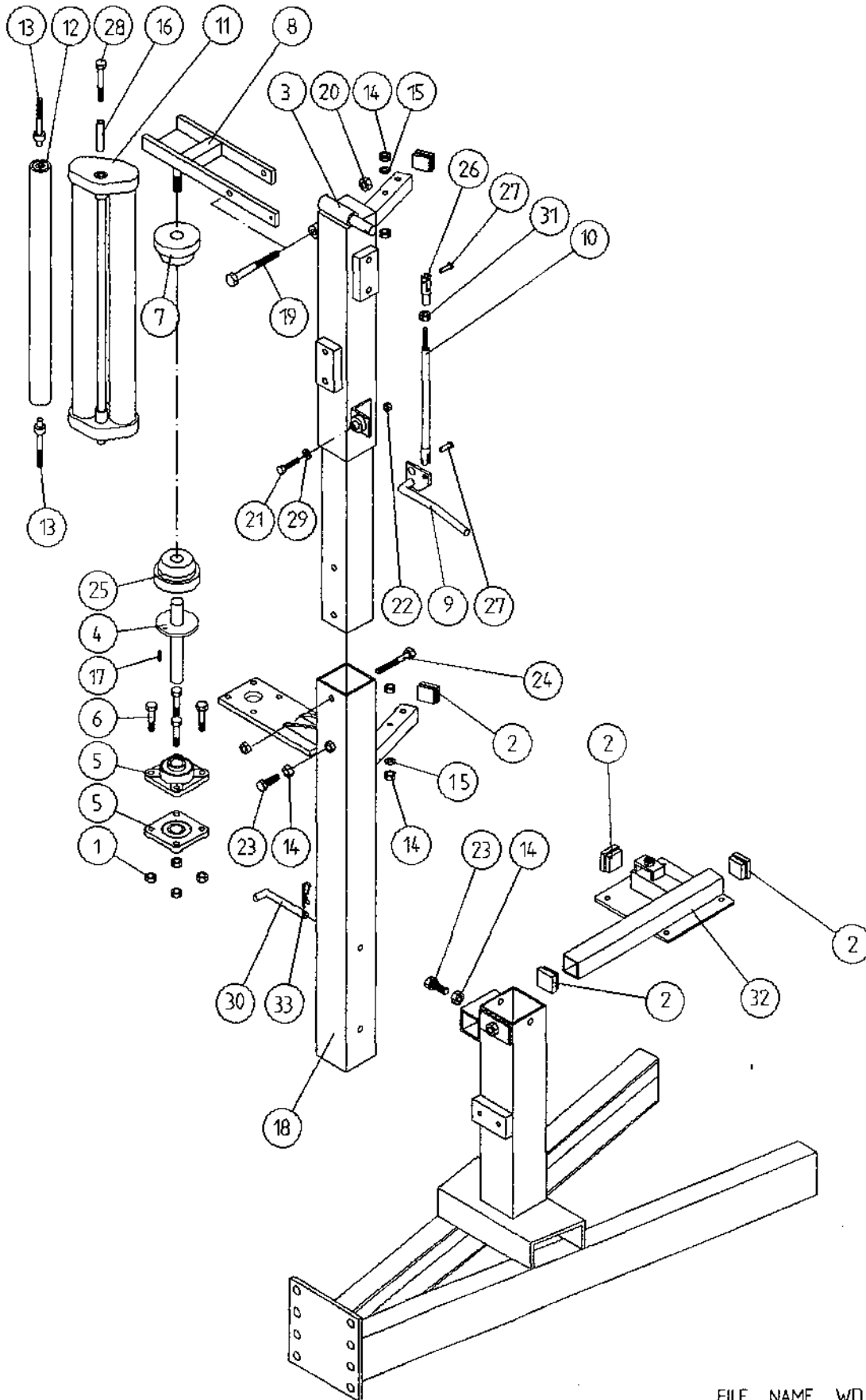
TANCO AUTOWRAP 400/500 MODEL (TRAILED) 1993

PARTS LIST

LIFT ARM AND CHASSIS

<u>ITEM NO.</u>	<u>DESCRIPTION</u>	<u>QTY.</u>	<u>PART NO.</u>
1.	CHASSIS ASSEMBLY	1	WD60-CHA
2.	LIFT ARM ASSEMBLY	1	WD60-LA
3.	ADJUSTABLE OUTER ARM ASSY.	1	WD60-LAAA
4.	ADJUSTABLE BALE STOP	1	WD60-LABS
5.	HYDRAULIC RAM (LIFT ARM)	1	Z01-01-AW
6.	RAM BOTTOM PIVOT PIN	1	Z03-02-330
7.	RAM TOP PIVOT PIN	1	Z03-01-797
8.	2" x 1/4" SPLIT PINS	3	Z03-21-29
9.	LIFT ARM PIVOT C/W GREASE NIPPLE	2	Z03-01-905
10.	M10 HEX HD SET x 25mm LONG (TUFLOCK)	3	Z26S-061
11.	10mm DIA MACHINED FLAT WASHER	3	Z11-02-10
12.	10mm DIA SPRING WASHER	3	Z12-02-10
13.	SPAREX PIN	1	Z03-04-73
14.	SPAREX PIN	1	Z03-04-77
15.	7/16" DIA LINCH PINS	2	Z03-22-06
16.	SAFETY SUPPORT BAR	1	WD60-319
17.	6mm DIA LINCH PIN	2	Z03-22-03
18.	PLASTIC CAP	1	Z32-10

TANCO AUTOWRAP 400 MODEL (TRAILED) 1993  
 FILM DISPENSER SYSTEM



FILE NAME WD60-PL11

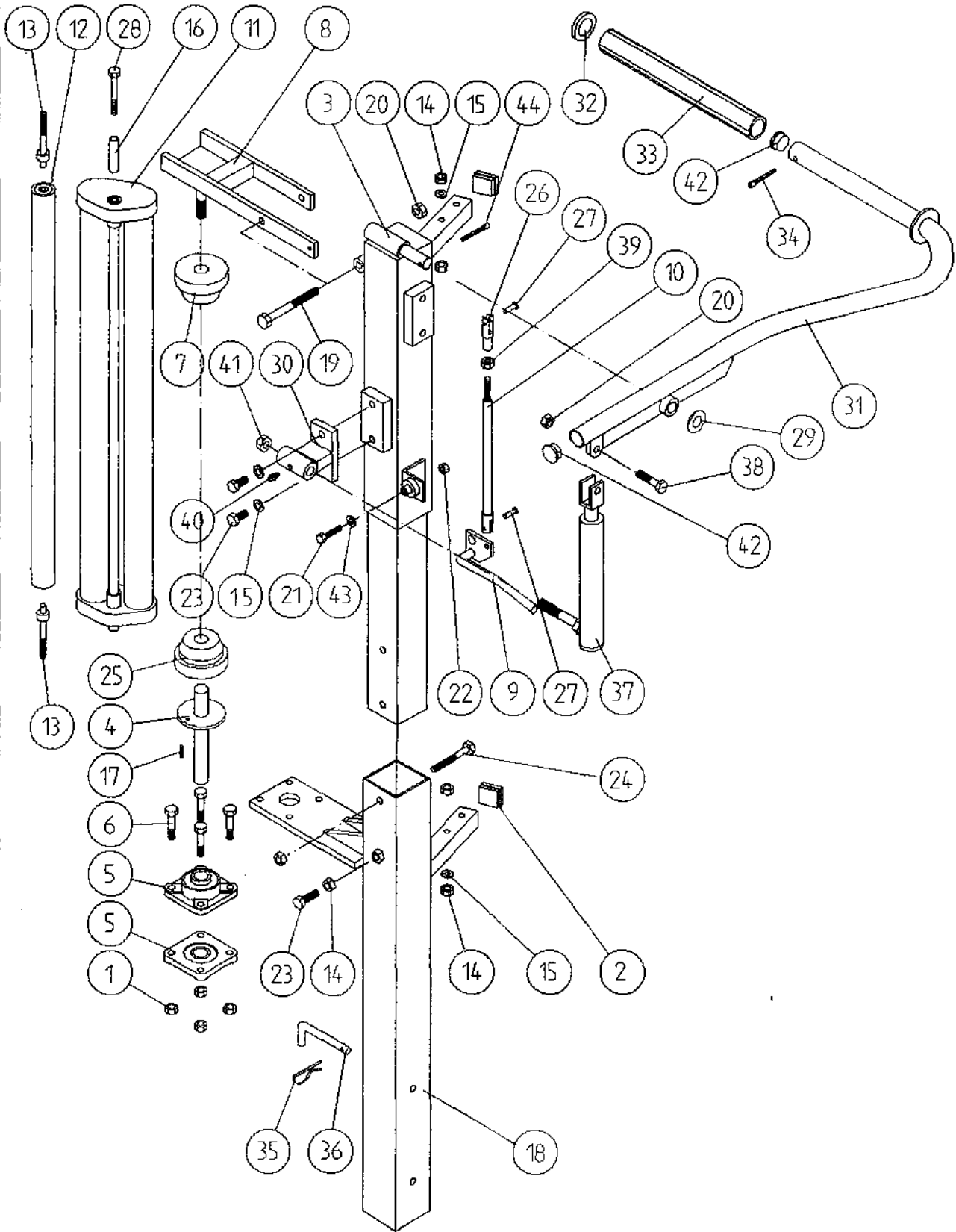


FILM DISPENSING SYSTEM

PARTS LIST

<u>ITEM NO.</u>	<u>DESCRIPTION</u>	<u>QTY.</u>	<u>PART NO.</u>
1.	M10 LOCKNUTS	4	Z23-10
2.	PLASTIC CAPS (TO SUIT 40 x 40 x 3 RHS)	5	Z32-07
3.	DISPENSER MOUNTING (UPPER)	1	WD60-DMUM
4.	FILM SPOOL ASSEMBLY	1	WD60-SPO
5.	1" DIA FLANGE BEARING	2	Z06-48
6.	M10 HEX HD. BOLT x 50mm LONG	4	Z26-066B
7.	CONE (TOP) C/W BALL BEARINGS	1	Z06-45-01
8.	CLAMP ASSEMBLY	1	WD60-DMCA
9.	LEVER ASSEMBLY	1	WD60-DMLA
10.	LINK ASSEMBLY	1	WD60-DMLK
11.	FILM DISPENSER UNIT MK 6	1	D613
12.	SLAVE ROLLER ASSY (PLASTIC COATED)	1	WD60-SLR
13.	SLAVE ROLLER PIVOT	2	WD60-253
14.	M12 HEX NUTS	6	Z18-12
15.	12mm DIA SPRING WASHER	2	Z12-02-12
16.	SPOOL VALVE MOUNTING PLATE ASSEMBLY	1	WD60-SUMP
17.	1/4" DIA TENSION PIN x 3/4" LONG	1	Z03-20-062
18.	DISPENSER MOUNTING (LOWER)	1	WD60-DMLM
19.	M12 HEX HD BOLT x 130mm LONG	1	Z26-094B
20.	M12 LOCKNUT	3	Z23-12
21.	M8 HEX HD BOLT x 35mm LONG	1	Z26-042S
22.	M8 LOCKNUT	1	Z23-08
23.	M12 HEX HD SET x 30mm LONG	2	Z26-082S
24.	M12 HEX HD BOLT x 100mm LONG	1	Z26-092B
25.	CONE (BOTTOM)	1	Z06-45-02
26.	CLEVIS (M10)	1	Z49-336
27.	PIN (5/16" DIA) C/W CLIP	2	Z49-337
28.	M10 HEX HD. BOLT X 80MM LONG 1	1	Z26-0691B
29.	8MM DIA MUD FLAP WASHER	1	Z11-02-081
30.	BISSEL PIN X 110MM LONG	1	WD60-B74
31.	5/16" UNF HEX NUT	1	Z15-05
32.	SPOOL VALVE MOUNTING	1	WD65-VMP
33	4MM 'R' CLIP	1	Z36-02

# TANCO AUTOWRAP 500 MODEL 1993 FILM DISPENSER SYSTEM



FILE NAME WD 625 - PL7

TANCO AUTOWRAP 500 MODEL (TRAILED) 1993

FILM DISPENSING SYSTEM

PARTS LIST

<u>ITEM NO.</u>	<u>DESCRIPTION</u>	<u>QTY.</u>	<u>PART NO.</u>
1.	M10 LOCKNUTS	4	Z23-10
2.	PLASTIC CAPS (TO SUIT 40 x 40 x 3 RHS)	2	Z32-07
3.	DISPENSER MOUNTING (UPPER)	1	WD60-DMUM
4.	FILM SPOOL ASSEMBLY	1	WD60-SPO
5.	1" DIA FLANGE BEARING	2	Z06-48
6.	M10 HEX HD. BOLT x 50mm LONG	4	Z26-066B
7.	CONE (TOP) C/W BALL BEARINGS	1	Z06-45-01
8.	CLAMP ASSEMBLY	1	WD60-DMCA
9.	LEVER ASSEMBLY	1	WD60-DMLA
10.	LINK ASSEMBLY	1	WD60-DMLK
11.	FILM DISPENSER UNIT MK 6	1	D613
12.	SLAVE ROLLER ASSY (PLASTIC COATED)	1	WD60-SLR
13.	SLAVE ROLLER PIVOT	2	WD60-253
14.	M12 HEX NUTS	5	Z18-12
15.	12mm DIA SPRING WASHER	2	Z12-02-12
16.	SLEEVE	1	
17.	1/4" DIA TENSION PIN x 3/4" LONG	1	Z03-20-062
18.	DISPENSER MOUNTING (LOWER)	1	WD60-DMLM
19.	M12 HEX HD BOLT x 130mm LONG	1	Z26-094B
20.	M12 LOCKNUT	3	Z23-12
21.	M8 HEX HD BOLT x 35mm LONG	1	Z26-042S
22.	M8 LOCKNUT	1	Z23-08
23.	M12 HEX HD SET x 30mm LONG	3	Z26-082S
24.	M12 HEX HD BOLT x 100mm LONG	1	Z26-092B
25.	CONE (BOTTOM)	1	Z06-45-02
26.	CLEVIS (M10)	1	Z49-336
27.	PIN (5/16" DIA) C/W CLIP	2	Z49-337
28.	M10 HEX HD. BOLT X 80MM LONG	1	Z26-0691B
29.	3/4" DIA FLAT WASHER	1	Z10-02-19
30.	FILM PULL DOWN BRACKET ASSY	1	WD65-FPDB
31.	FILM PULL DOWN ARM ASSY	1	WD65-FPDA
32.	RETAINING WASHER	1	WD60-859
33.	Roller	1	WD60-866
34.	2" x 1/4" SPLIT PIN	1	Z01-23-29
35.	4mm "R" CLIP	1	Z36-02
36.	BISSEL PIN (110mm LONG)	1	WD60-874
37.	HYDRAULIC RAM	1	Z01-01-AW25
38.	M12 HEX HD. SET X 50mm LONG	1	Z26-086S
39.	5/16" UNF HEX NUT	1	Z15-05



40.	1/8" BSP ST. GREASE NIPPLE	1	Z39-60
41.	M16 Locknut	1	Z23-16
42.	1" GB Plastic Cap	2	Z32-14
43.	8mm Dia Mud Flap Washer	1	Z11-02-081
44.	1 1/2" x 3/16" Split Pin	1	Z03-20-05

## FAULT FINDING SUMMARY

<u>PROBLEMS</u>	<u>PROPOSED REMEDY</u>
1. Wear on Drive Sprocket and Index Rollers	Check that collar is secure on main spindle below bearing. Grease sprockets often. Reduce speed to below 25 r.p.m. Check and adjust index shaft sprocket clearance. See page 10
2. Large Taper Lock Bush breaking	Ensure it is tight on shaft. Check Chain Tension. Reduce speed to below 25 r.p.m. Check correct key is fitted to shaft.
3. Drive Belt Slipping on Drive	Adjust motor mount so it is 25mm in on mounting spud. Tension Belt with Automatic tension set to 25-30 degrees - see page 8. Check belt is correct pitch if it has been replaced.
4. Drive Belt breaking, and Bottom or Top Rim coming off motor sprocket	Check that cross line relief valve is working on motor. Check motor mount for alignment. Reduce tension on Drive Belt. Check there is no vertical movement of turntable spindle - if so tighten bearing locking screws on spindle and ensure that collar is secure on spindle below bearing.
5. Film Breaking	Wash off dispenser and slave rollers. Change roll of film. Use recommended films only.
6. Film not wrapping evenly on bale	Adjust film mast so centre of film roll is aligned with centre of bale. See page 7
7. Bale Rolls forward and loses overlap sequence	Adjust brake on index sprocket shaft. Check sprocket clearance on quadrant rollers. Ensure index rollers and sprocket are well greased. Check location of cam assy. Check speed of turntable (25 r.p.m. recommended)
8. Film Tearing on Ramp	Check for sharp edges and remove.
9. Bale Skidding on Ramp	Fit Hessian Bag or piece of Carpet to Ramp.
10. Film Dispenser not Pre-Stretching Film	Check that both Rollers turn when one is turned by hand. If not, fit new gears or replace unit.
11. Tyres coming off 4" Platform Support Wheels	Replace Wheels - Reduce speed below 25 r.p.m. - <u>Do not oil</u> or grease path of wheels on platform.

FAULT FINDING SUMMARY

PROBLEMS

PROPOSED REMEDY

12. Bale belt does not rotate  
bale but slips under it

To avoid flattening of bales wrap within  
2 - 3 hours of baling.

(Bale rests on 4" horizontal  
rollers and not on bale belt.  
This is caused when bales become  
flattened by being left too  
long after baling before  
being wrapped)

In the event of flattened Bales:  
Adjust out upper horizontal rollers  
on same side as 6" drive roller.

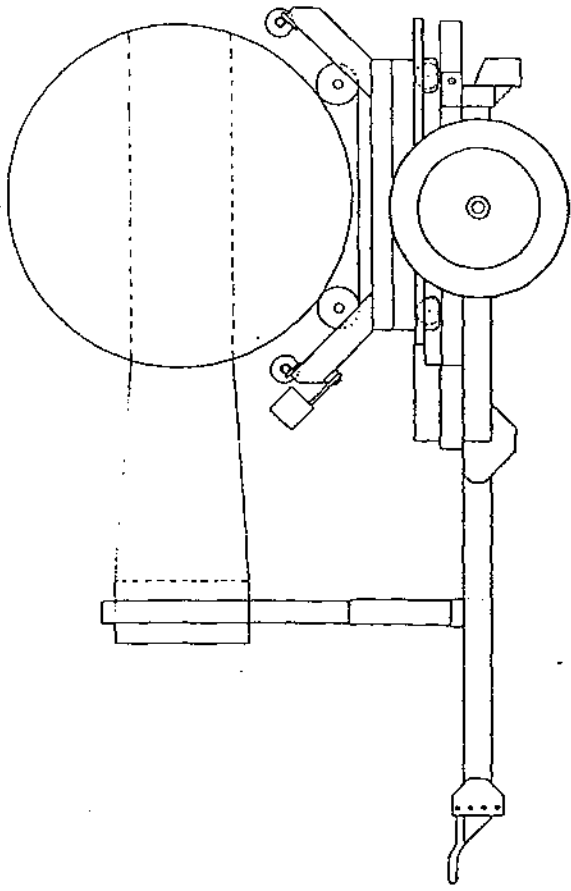


Fig. 2

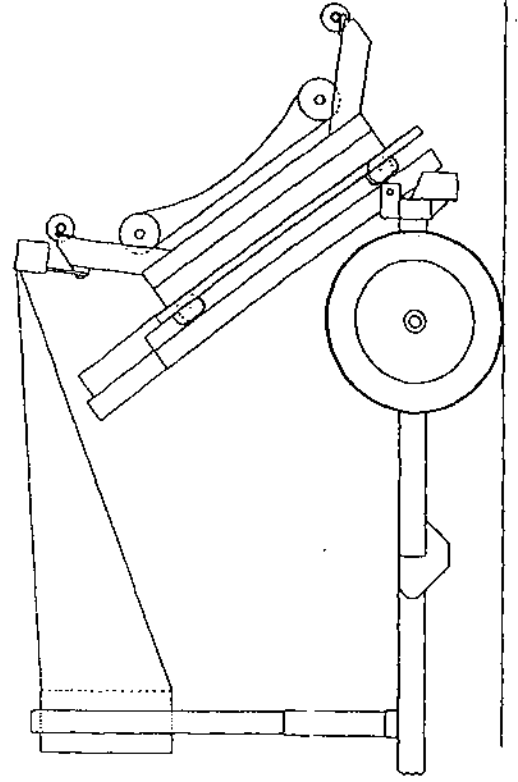


Fig. 4

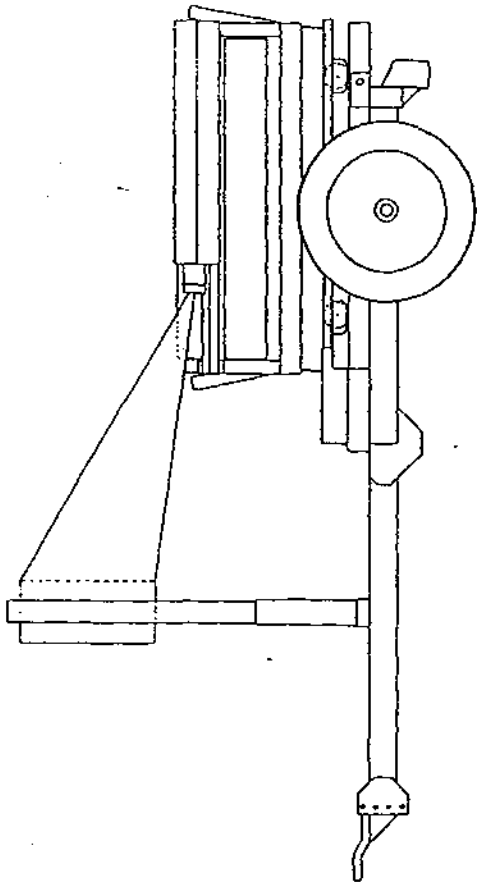


Fig. 1

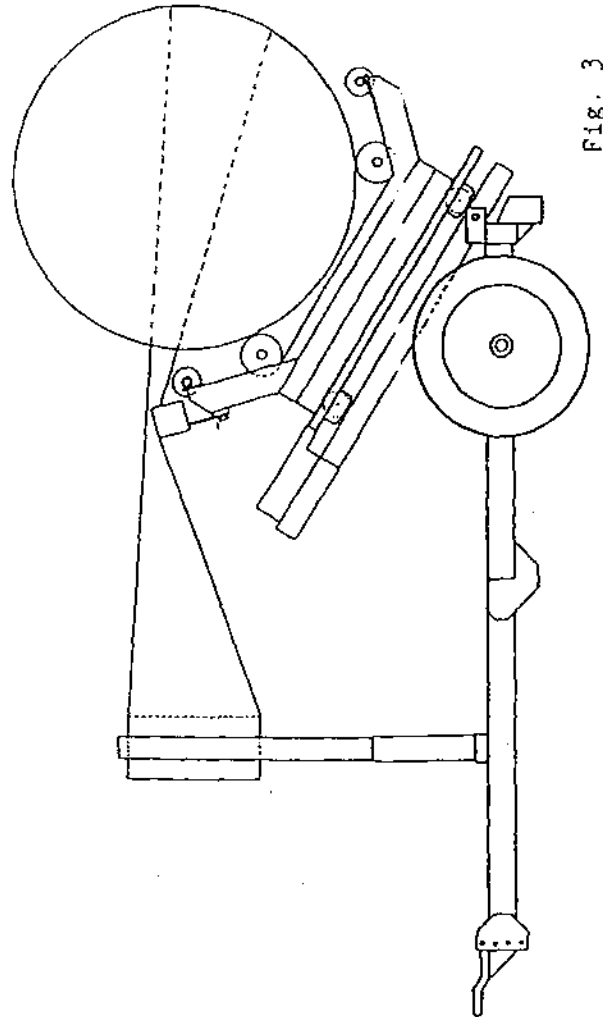
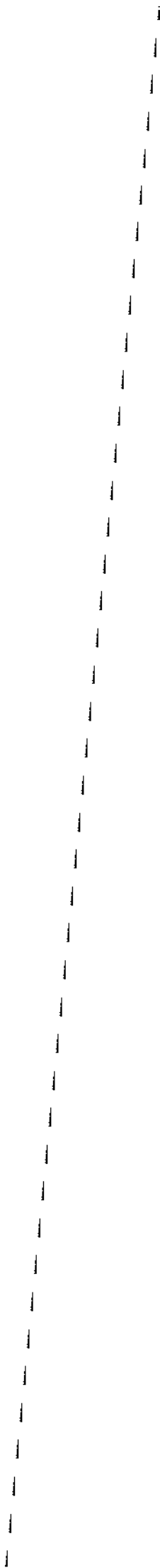
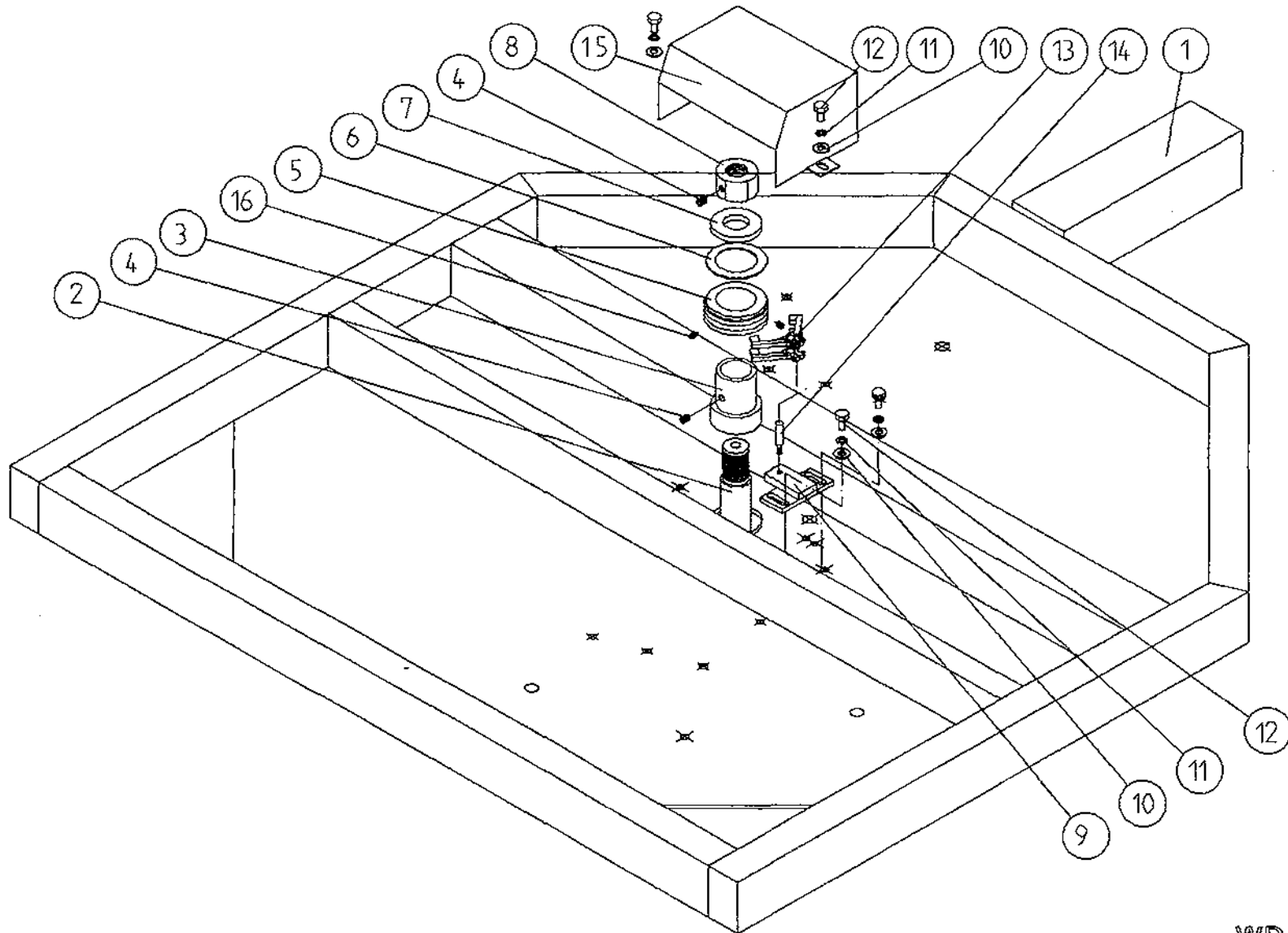


Fig. 3





TANCO AUTOWRAP - CUT AND START UNIT (1993)  
SLIP RING ASSEMBLY



TANCO AUTOWRAP CUT AND START UNIT (1993)

SLIP RING ASSY.

PARTS LIST

<u>ITEM NO.</u>	<u>DESCRIPTION</u>	<u>QTY.</u>	<u>PART NO.</u>
1.	UNDERSIDE OF TIPPING FRAME	1	
2.	TURNTABLE ASSEMBLY	1	
3.	SLIP RING MOUNTING SLEEVE	1	WD60-825
4.	M8 GRUB SCREW	2	Z28-006
5.	SLIP RING ASSY.	1	Z0605-308
6.	INSULATING RING	1	Z0605-350
7.	LOCKING COLLAR	1	WD60-770
8.	1 1/4" UNC HEX NUT	1	Z18-300
9.	SLIP RING MOUNTING BRACKET ASSY.	1	WD605-SRMB
10.	10mm DIA FLAT WASHER 1" O.D.	4	Z11-02-101
11.	10mm SPRING WASHER	4	Z12-02-10
12.	M10 HEX HD SET x 20mm	4	Z26-060S
13.	BRUSHES	2	Z0605-306
14.	INSULATOR SLEEVE	1	Z0605-304
15.	SLIP RING GUARD ASSY	1	WD605-SRG
16.	M5 GRUB SCREW	2	Z28-005

TANCO AUTOWRAP CUT AND START  
SENSOR MOUNTING BRACKET  
MAGNET MOUNTING BRACKET.

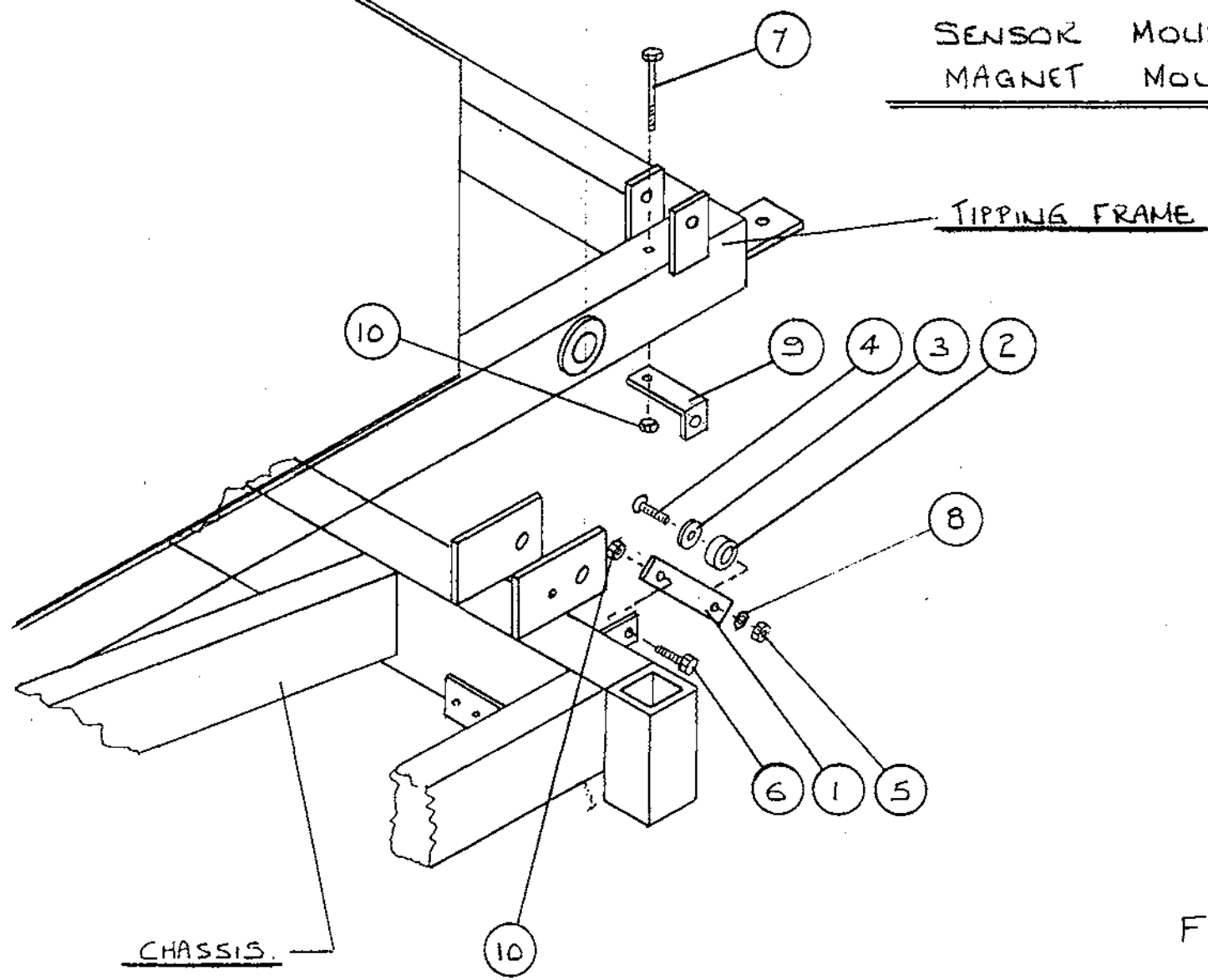


FIG. 6

TANCO © 1989.

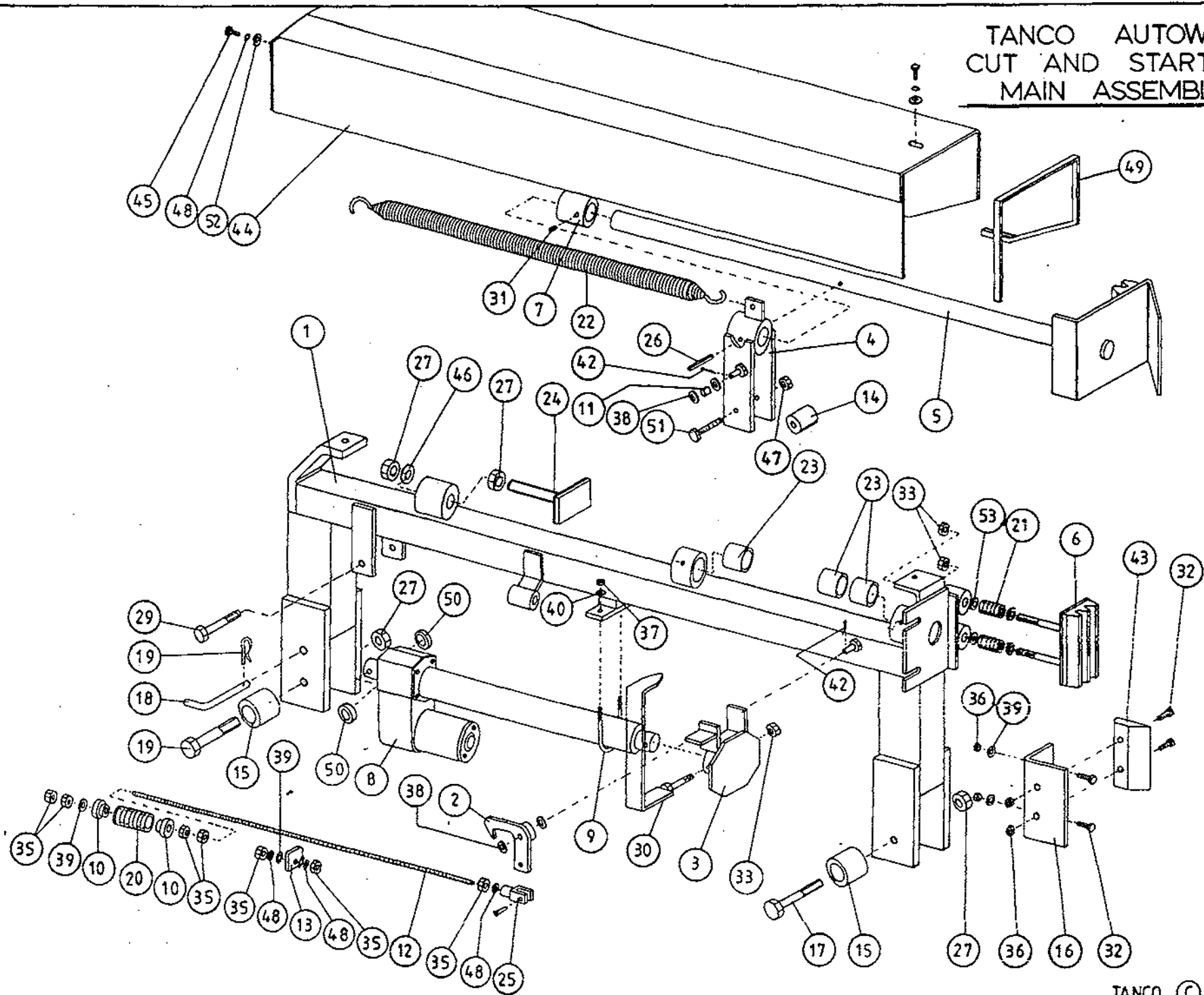
TANCO AUTOWRAP CUT AND START UNIT 1993

SENSOR AND MAGNET MOUNTING BRACKETS

PARTS LIST

<u>ITEM NO.</u>	<u>DESCRIPTION</u>	<u>QTY.</u>	<u>PART NO.</u>
1	MAGNET MOUNTING FLAT	1	WD605-57
2	MAGNET 35mm O.D. x 17mm I.D. x 8mm LONG	1	ZD605-200
3	8mm DIA FLAT WASHER 1" O.D.	1	Z11-02-081
4	M6 CS'K SET SCREW x 25mm	1	Z13-131
5	M8 LOCKNUT (NYLOCK)	1	Z23-06
6	M8 HEX HD SET x 20mm	1	Z26-020S
7	M6 HEX HD BOLT x 100	1	Z26-057B
8	6mm DIA FLAT WASHER	1	Z11-02-06
9	SENSOR MOUNTING BRACKET	1	WD605-58
10	M8 LOCKNUT (NYLOCK)	2	Z23-08

TANCO AUTOWRAP  
CUT AND START UNIT (1993)  
MAIN ASSEMBLY



TANCO AUTOWRAP CUT AND START UNIT (1993)

PARTS LIST

<u>ITEM NO.</u>	<u>DESCRIPTION</u>	<u>QTY.</u>	<u>PART NO.</u>
1.	MAIN MOUNTING FRAME ASSY.	1	WD605-MF
2.	LATCH ASSY.	1	WD605-LA
3.	PUSH PLATE ASSY.	1	WD605-PP
4.	GUIDE ASSY.	1	WD605-GD
5.	PLUNGER ASSY.	1	WD605-PL
6.	FILM GRIPPER ASSY.	1	WD605-FG
7.	PLUNGER END CAP	1	WD605-90
8.	WARNER LINEAR ACTUATOR D11 10B5 08 NO CLUTCH 12V	1	Z0605-500
9.	"U" BOLT	1	WD605-45
10.	STEPPED COLLAR	2	WD605-46
11.	SLEEVE 1/2" DIA O.D. x 13/32" DIA I.D.	1	WD605-47
12.	THREADED ROUND 5/16" UNF	1	WD605-48
13.	TRIGGER	1	WD605-50
14.	COLLAR 1" DIA BRIGHT RD. x 41.5mm LONG	1	WD605-51
15.	SPACER	1	WD605-100
16.	BLADE GUARD/MOUNTING BRACKET	1	WD605-105
17.	M12 HEX HD BOLT x 80mm LONG	2	Z26-0901B
18.	BISSEL PIN	1	Z03-22-AW100
19.	4mm "R" CLIP	1	Z36-02
20.	SPRING 1.6mm O.D. x 1.5mm WIRE x 48mm LONG	1	Z07-34
21.	SPRING 1.09" O.D. x 0.092" WIRE x 1.54" LONG	2	Z07-44
22.	SPRING 1.125" O.D. x 0.125" WIRE x 330mm	1	Z07-46
23.	OILITE OIL RETAINING BUSH 1 1/8" O.D. x 3/4" I.D. x 1" L.	3	Z06-105
24.	RUBBER BUFFER ASSY.	1	WD605-BA
25.	CLEVIS C/W PIN	1	Z49-33
26.	1 1/2" x 1/4" DIA TENSION PIN	1	Z03-20-07
27.	M16 HEX NUTS	2	Z18-16
28.	M12 LOCKNUTS	2	Z23-12
29.	M12 HEX HD BOLT x 65mm	1	Z26-0882B
30.	INDICATOR ASSY	1	WD605-PR
31.	M8 GRUB SCREW	1	Z28-008
32.	M8 HEX HD SET x 25mm	4	Z26-025S
33.	M12 BINX LOCKNUT	4	Z23-12BX



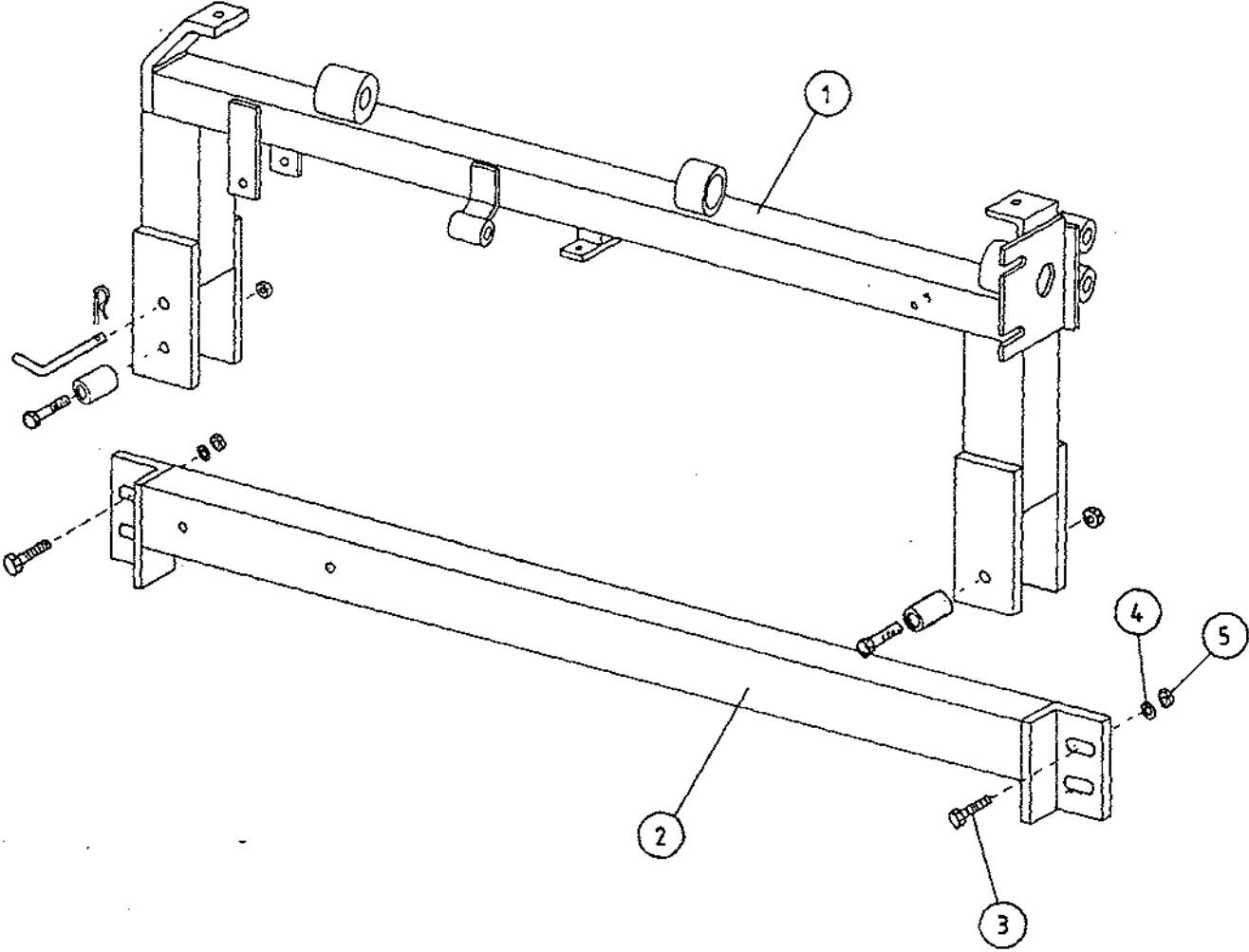


TANCO AUTOWRAP CUT AND START UNIT (1993)

PARTS LIST

<u>ITEM NO.</u>	<u>DESCRIPTION</u>	<u>QTY.</u>	<u>PART NO.</u>
35.	5/16" UNF HEX NUT	7	Z15-05
36.	M8 LOCKNUT	6	Z18-08
37.	M6 LOCKNUT (NYLOCK)	2	Z23-16
38.	10mm DIA FLAT WASHER	10	Z11-02-10
39.	8mm DIA FLAT WASHER	5	Z11-02-08
40.	6mm DIA FLAT WASHER	2	Z11-02-06
42.	3mm DIA SPLIT PIN	2	Z03-21-02
43.	BLADE	1	WD605-104
44.	MAIN GUARD	1	WD605-MG
45.	M8 HEX HD SET x 20mm LONG	2	Z26-020S
46.	16mm DIA SPRING WASHER	2	Z12-02-16
47.	M10 LOCKNUT	1	Z23-10
48.	8mm DIA SPRING WASHER	9	Z12-02-08
49.	EDGING STRIP	1	Z44-12
50.	SPACER 1" O.D. x 1/2" I.D. x 6mm LONG	2	WD605-65
51.	M10 HEX HD H/T BOLT X 70mm LONG	1	Z26-068B
52.	8mm DIA FLAT WASHER 1" O.D.	4	Z11-02-081
53.	25MM O.D. X 12MM I.D. FILM GRIP WASHER	1	Z11-02-12FG

TANCO AUTOWRAP CUT AND START (1993)  
MOUNTING FRAME



TANCO AUTOWRAP CUT AND START UNIT (1993)

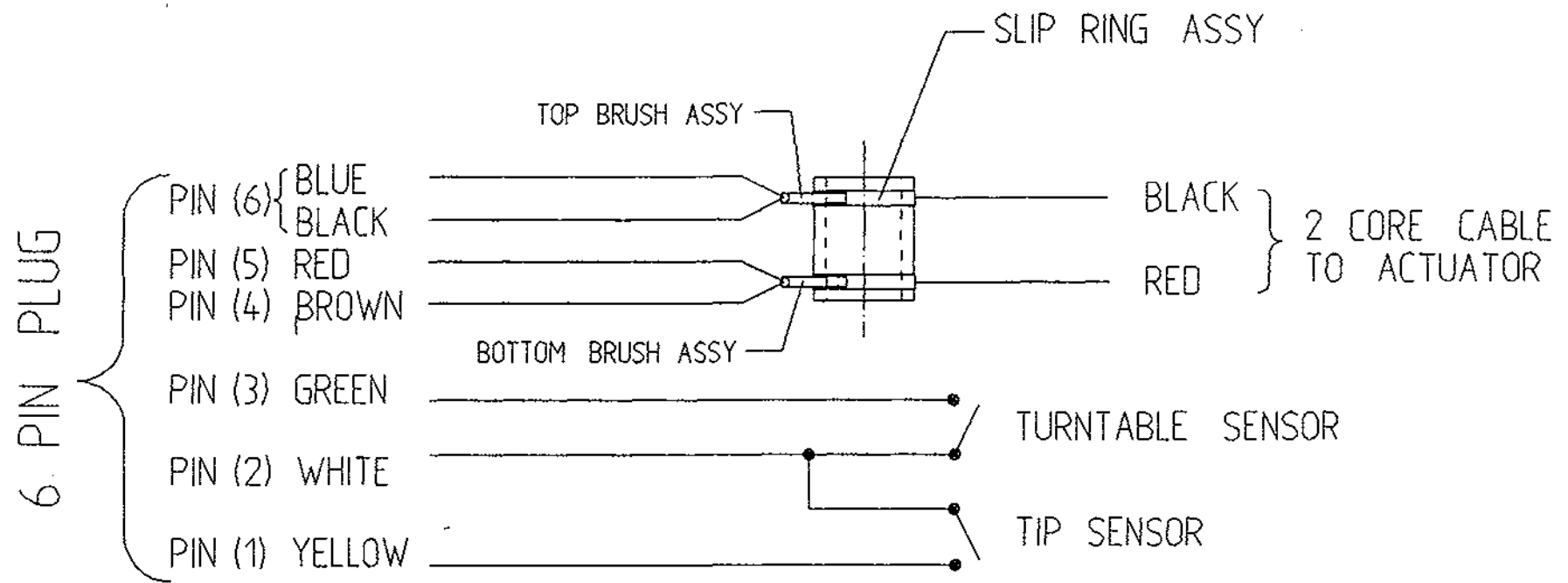
MOUNTING FRAME

PARTS LIST

<u>ITEM NO.</u>	<u>DESCRIPTION</u>	<u>QTY.</u>	<u>PART NO.</u>
1.	MAIN MOUNTING FRAME ASSY.	1	WD605-MFA
2.	MAIN FRAME MOUNTING	1	WD605-MFM
3.	M10 HEX HD SET x 30mm LONG	2	Z26-062S
4.	10mm DIA SPRING WASHER	2	Z12-02-10
5.	M10 HEX NUT	2	Z18-10



# TANCO AUTOWRAP CUT AND START ELECTRICAL CIRCUIT



## TANCO AUTOWRAP

### Cut and Start

#### Fault Finding Summary

This summary is to be read in conjunction with operators handbook.

Note: It has been found that most faults can be attributed to a bad power supply. Therefore it is essential that power supply be taken directly from battery terminals, ensuring correct polarity. Operating voltage is 10V D.C. (under load) to 13.5V D.C.

<u>Problem</u>	<u>Proposed Remedy</u>
(1) Bale Wrap monitor does not power on	(a) Check polarity on connections to battery terminals (b) Check fuse, in bale wrap controller
(2) Plunger does not come out after 2 revolutions of turntable	(a) Ensure that left hand top switch is in auto mode. (b) Check operation in manual mode to ensure that plunger travels in and out. If the plunger does not travel in and out, check all connections from six pin plug, through slip ring to linear actuator.
(2) (i) Buzzer sound continuously "bleep", "bleep" and bale wrap monitor does not count above 2 revs.	(c) Check voltage while operating in manual mode. This voltage should be no lower than 10 V D.C. (under load). Also check connections on battery terminals. (d) Check that bale wrap monitor is counting revolutions and if not check that turntable sensor is within 6mm of magnet on turntable. (e) Carry out continuity check on turntable sensor, by taking reading across pins 2 and 3 in six pin plug.
(3) Plunger opens too soon and releases film.	(a) Check setting for function (1), which indicates number of turns to activate motor. This should be 2. (b) Check setting for function (7), which indicates non auto reset. This should be N.
(4) Plunger travels out but latch does not engage so plunger travels back in.	(a) Increase setting for function (2) which indicates the number of seconds linear actuator powers out for. Setting can be changed in increments of 0.5 sec.

Problem

- (5) Plunger snaps closed after about 6 turntable revolutions.  
This is caused by the Linear Actuator not stopping in park position.
- (6) Plunger opens while turntable rotates after buzzer sounds.
- (7) When machine is tipped plunger does not close.

Proposed Remedy

- (a) Reduce setting for function (4), which indicates the number of seconds required to reverse to park position. Setting can be altered in increments of 0.5 sec. In the park position there should be 5mm to 12mm clearance between cam on push plate assy and latch trigger.
- (a) Check setting for function (7) which indicates non auto reset. This should be N.
- (a) Check clearance between tip sensor on back of tipping frame and magnet on chassis. This clearance should be 5mm to 6mm.
- (b) Check that tip sensor passes magnet, if not adjust magnet position.
- (c) Check that latch trigger is activated by cam on push plate assy. If not adjust trigger.
- (d) Check setting for function (5) which indicates the number of seconds from tipping signal until motor is fully closed. This should be 1.5 sec.

## G U A R A N T E E

Subject as hereunder provided, the Sellers undertake to correct either by repair, or at their election, by replacement, any defect of material or workmanship which occurs in any of its goods within twelve months after delivery of such goods to a first user, with the exception of contractors or commercial users when warranty period is six months. In respect of Autowraps the warranty period is for 12 months or 8,000 bales whichever ever occurs first.

The term "goods" when used in this document means the article or articles described in invoice as sold by the Sellers but does not include equipment or proprietary parts or accessories not manufactured by the Sellers. The Sellers, however, undertake to pass on so far as they legally can to the first user the benefit of any warranty given to the Sellers by the suppliers of such equipment, parts or accessories.

This understanding shall not apply to:

- (a) Any goods which have been sold by the first user.
- (b) Any goods which have been injured by unfair wear and tear, neglect or improper use.
- (c) Any goods the identification marks of which have been altered or removed.
- (d) Any goods which have not received the basic normal maintenance such as tightening of bolts, nuts, tines, hose connections and fittings and normal lubrication with the recommended lubricant.
- (e) The use of any product on tractors exceeding the recommended horsepower.
- (f) Any goods which have been altered or repaired other than on instruction or with the written approval of the Sellers or to which any part not manufactured or having written approval by the Sellers has been fixed.
- (g) Any second-hand goods or part thereof.

Any allegedly defective part or parts returned to the Sellers must be sent carriage paid. No claim for repair or replacement will be entertained unless upon discovery of the alleged defect written notification is sent to the Sellers giving, at the same time, the name of the Buyer from whom the goods were purchased and the date of purchase together with full details of the alleged defect and the circumstances involved, also the serial number of the machine etc..

The Sellers shall be under no liability to their Buyers and first and subsequent users of their goods or to any other person or persons for loss or damages howsoever arising in respect of either personal injuries or for special or consequential damage of any kind or from any cause whatsoever arising out of, or in any way connected with or arising from the manufacture, sale, handling, repair, maintenance, replacement or use of its goods or the failure or malfunction of any of its goods.

Representation and/or warranties made by any person (including Buyers and employees and other representatives of the Sellers) which are inconsistent or conflicting with these conditions are not binding upon the Sellers unless given in writing and signed by a Director of the Sellers.

## C L A I M S

If you wish to make a claim under guarantee:

1. Immediately, stop using the machine.
2. List the details of the machine and damaged item, (as shown inside the front cover of this booklet).
3. Consult with your Tanco dealer (supplier) and have him forward your claim and the damaged item to Tanco.